

Product Name: RHEB Rabbit Polyclonal Antibody
Catalog #: APRab17107



Summary

Production Name	RHEB Rabbit Polyclonal Antibody
Description	Rabbit Polyclonal Antibody
Host	Rabbit
Application	WB
Reactivity	Human,Mouse,Rat,Predicted:Cow

Performance

Conjugation	Unconjugated
Modification	Unmodified
Isotype	IgG
Clonality	Polyclonal
Form	Liquid
Storage	Store at 4°C short term. Aliquot and store at -20°C long term. Avoid freeze/thaw cycles.
Buffer	Liquid in PBS containing 50% glycerol, 0.5% BSA and 0.02% New type preservative N.
Purification	Affinity purification

Immunogen

Gene Name	RHEB RHEB2
Alternative Names	Ras homolog enriched in brain
Gene ID	6009.0
SwissProt ID	Q15382.Synthetic Peptide of RHEB

Application

Dilution Ratio	WB 1:500-2000 ELISA 2000-20000
Molecular Weight	20kD

Background

This gene is a member of the small GTPase superfamily and encodes a lipid-anchored, cell membrane protein with five repeats of the RAS-related GTP-binding region. This protein is vital in regulation of growth and cell cycle progression due

Product Name: RHEB Rabbit Polyclonal Antibody
Catalog #: APRab17107

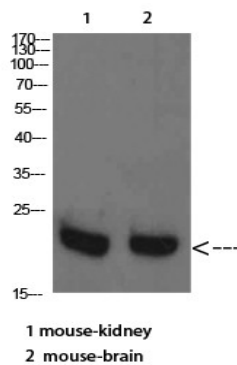


to its role in the insulin/TOR/S6K signaling pathway. The protein has GTPase activity and shuttles between a GDP-bound form and a GTP-bound form, and farnesylation of the protein is required for this activity. Three pseudogenes have been mapped, two on chromosome 10 and one on chromosome 22. [provided by RefSeq, Jul 2008],function:Not known; binds GTP and exhibits intrinsic GTPase activity.,similarity:Belongs to the small GTPase superfamily. Rheb family.,tissue specificity:Ubiquitous. Highest levels observed in skeletal and cardiac muscle.,

Research Area

mTOR;Insulin_Receptor;

Image Data



Western Blot analysis of mouse-kidney mouse-brain cells using RHEB Polyclonal Antibody diluted at 1:2000. Secondary antibody was diluted at 1:20000

Note

For research use only.