

Product Name: RFX2 Rabbit Polyclonal Antibody
Catalog #: APRab17065



Summary

Production Name	RFX2 Rabbit Polyclonal Antibody
Description	Rabbit Polyclonal Antibody
Host	Rabbit
Application	IHC,ELISA
Reactivity	Human,Rat,Mouse

Performance

Conjugation	Unconjugated
Modification	Unmodified
Isotype	IgG
Clonality	Polyclonal
Form	Liquid
Storage	Store at 4°C short term. Aliquot and store at -20°C long term. Avoid freeze/thaw cycles.
Buffer	Liquid in PBS containing 50% glycerol, 0.5% BSA and 0.02% New type preservative N.
Purification	Affinity purification

Immunogen

Gene Name	RFX2
Alternative Names	RFX2; DNA-binding protein RFX2; Regulatory factor X 2
Gene ID	5990.0
SwissProt ID	P48378.The antiserum was produced against synthesized peptide derived from human RFX2. AA range:661-710

Application

Dilution Ratio	IHC 1:100-1:300 ELISA: 1:10000
Molecular Weight	

Background

This gene is a member of the regulatory factor X gene family, which encodes transcription factors that contain a highly-

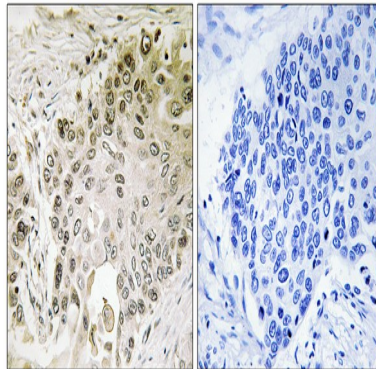
Product Name: RFX2 Rabbit Polyclonal Antibody
Catalog #: APRab17065



conserved winged helix DNA binding domain. The protein encoded by this gene is structurally related to regulatory factors X1, X3, X4, and X5. It is a transcriptional activator that can bind DNA as a monomer or as a heterodimer with other RFX family members. This protein can bind to cis elements in the promoter of the IL-5 receptor alpha gene. Two transcript variants encoding different isoforms have been described for this gene, and both variants utilize alternative polyadenylation sites. [provided by RefSeq, Jul 2008],similarity:Belongs to the RFX family.,

Research Area

Image Data



Immunohistochemistry analysis of paraffin-embedded human lung carcinoma, using RFX2 Antibody. The picture on the right is blocked with the synthesized peptide.

Note

For research use only.