
Summary

Production Name	Repetin Rabbit Polyclonal Antibody
Description	Rabbit Polyclonal Antibody
Host	Rabbit
Application	WB,
Reactivity	Human,Rat,Mouse

Performance

Conjugation	Unconjugated
Modification	Unmodified
Isotype	IgG
Clonality	Polyclonal
Form	Liquid
Storage	Store at 4°C short term. Aliquot and store at -20°C long term. Avoid freeze/thaw cycles.
Buffer	Liquid in PBS containing 50% glycerol, 0.5% BSA and 0.02% New type preservative N.
Purification	Affinity purification

Immunogen

Gene Name	RPTN
Alternative Names	RPTN; Repetin
Gene ID	126638.0
SwissProt ID	Q6XPR3.The antiserum was produced against synthesized peptide derived from human RPTN. AA range:648-697

Application

Dilution Ratio	WB 1:500-2000
Molecular Weight	90kD

Background

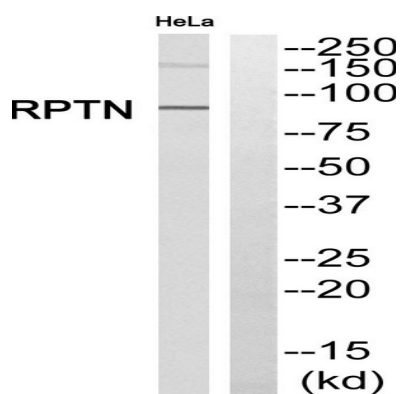
Product Name: Repetin Rabbit Polyclonal Antibody
Catalog #: APRab17023



domain:Can be divided into a N-terminal domain with significant homology to S100-like calcium-binding proteins, a central domain containing a series of short tandem repeats, and two flanking segments with low homology to the consensus sequences of the central repeats.,function:Involved in the cornified cell envelope formation. Multifunctional epidermal matrix protein. Reversibly binds calcium.,PTM:Phosphorylated upon DNA damage, probably by ATM or ATR.,PTM:Potential substrate of transglutaminase. Some arginines are probably converted to citrullines by peptidylarginine deimidase.,similarity:Belongs to the S100-fused protein family.,similarity:Contains 2 EF-hand domains.,tissue specificity:Expression is scattered in the normal epidermis but strong in the acrosyngium, the inner hair root sheat and in the filiform papilli of the tongue.,domain:Can be divided into a N-terminal domain with significant homology to S100-like calcium-binding proteins, a central domain containing a series of short tandem repeats, and two flanking segments with low homology to the consensus sequences of the central repeats.,function:Involved in the cornified cell envelope formation. Multifunctional epidermal matrix protein. Reversibly binds calcium.,PTM:Phosphorylated upon DNA damage, probably by ATM or ATR.,PTM:Potential substrate of transglutaminase. Some arginines are probably converted to citrullines by peptidylarginine deimidase.,similarity:Belongs to the S100-fused protein family.,similarity:Contains 2 EF-hand domains.,tissue specificity:Expression is scattered in the normal epidermis but strong in the acrosyngium, the inner hair root sheat and in the filiform papilli of the tongue.,

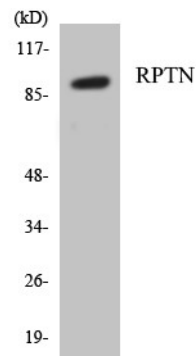
Research Area

Image Data

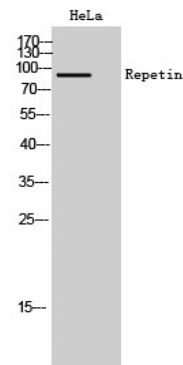


Western blot analysis of RPTN Antibody. The lane on the right is blocked with the RPTN peptide.

Product Name: Repetin Rabbit Polyclonal Antibody
Catalog #: APRab17023



Western blot analysis of the lysates from HepG2 cells using RPTN antibody.



Western Blot analysis of HeLa cells using Repetin Polyclonal Antibody

Note

For research use only.