

Product Name: REP-2 Rabbit Polyclonal Antibody
Catalog #: APRab17021



Summary

Production Name	REP-2 Rabbit Polyclonal Antibody
Description	Rabbit Polyclonal Antibody
Host	Rabbit
Application	IHC, WB, ELISA
Reactivity	Human

Performance

Conjugation	Unconjugated
Modification	Unmodified
Isotype	IgG
Clonality	Polyclonal
Form	Liquid
Storage	Store at 4°C short term. Aliquot and store at -20°C long term. Avoid freeze/thaw cycles.
Buffer	Liquid in PBS containing 50% glycerol, 0.5% BSA and 0.02% New type preservative N.
Purification	Affinity purification

Immunogen

Gene Name	CHML
Alternative Names	CHML; REP2; Rab proteins geranylgeranyltransferase component A 2; Choroideraemia-like protein; Rab escort protein 2; REP-2
Gene ID	1122.0
SwissProt ID	P26374.The antiserum was produced against synthesized peptide derived from human CHML. AA range:128-177

Application

Dilution Ratio	WB 1:500 - 1:2000. IHC 1:100 - 1:300. ELISA: 1:5000..
Molecular Weight	85kD

Product Name: REP-2 Rabbit Polyclonal Antibody
Catalog #: APRab17021

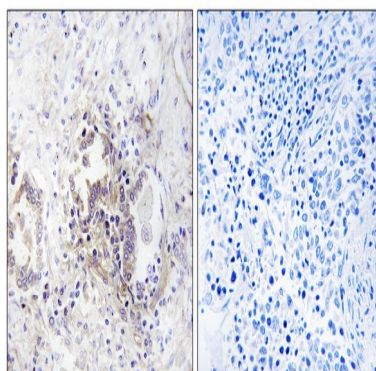


Background

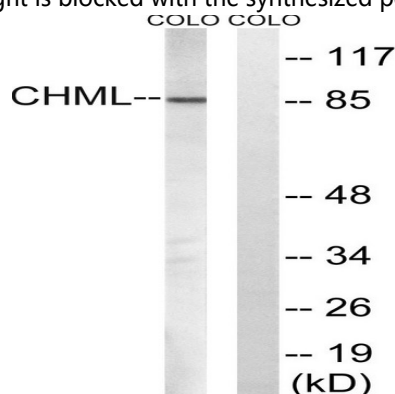
The product of the CHML gene supports geranylgeranylation of most Rab proteins and may substitute for REP-1 in tissues other than retina. CHML is localized close to the gene for Usher syndrome type II. [provided by RefSeq, Jul 2008],function: Binds unprenylated Rab proteins, presents it to the catalytic Rab GGTase dimer, and remains bound to it after the geranylgeranyl transfer reaction. The component A is thought to be regenerated by transferring its prenylated Rab back to the donor membrane. Less effective than REP-1 in supporting prenylation of Rab3 family.,miscellaneous: Substitutes for REP-1 thereby preventing widespread tissue abnormalities in patients with choroideremia who lack REP-1.,similarity: Belongs to the Rab GDI family.,subunit: Monomer. Interacts with Rab and Rab GGTase.,

Research Area

Image Data

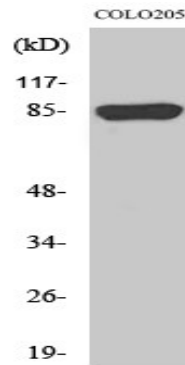


Immunohistochemistry analysis of paraffin-embedded human lung carcinoma tissue, using CHML Antibody. The picture on the right is blocked with the synthesized peptide.



Western blot analysis of lysates from COLO cells, using CHML Antibody. The lane on the right is blocked with the synthesized peptide.

Product Name: REP-2 Rabbit Polyclonal Antibody
Catalog #: APRab17021



Western Blot analysis of various cells using REP-2 Polyclonal Antibody diluted at 1 : 1000

Note

For research use only.