

Product Name: Renin Receptor Rabbit Polyclonal Antibody
Catalog #: APRab17018

Summary

Production Name	Renin Receptor Rabbit Polyclonal Antibody
Description	Rabbit Polyclonal Antibody
Host	Rabbit
Application	IF,IHC,WB,
Reactivity	Human,Mouse,Rat

Performance

Conjugation	Unconjugated
Modification	Unmodified
Isotype	IgG
Clonality	Polyclonal
Form	Liquid
Storage	Store at 4°C short term. Aliquot and store at -20°C long term. Avoid freeze/thaw cycles.
Buffer	Liquid in PBS containing 50% glycerol, 0.5% BSA and 0.02% New type preservative N.
Purification	Affinity purification

Immunogen

Gene Name	ATP6AP2 ATP6AP2; ATP6IP2; CAPER; ELDF10; HT028; MSTP009; PSEC0072; Renin receptor;
Alternative Names	ATPase H(+)-transporting lysosomal accessory protein 2; ATPase H(+)-transporting lysosomal-interacting protein 2; ER-localized type I transmembrane adaptor; Embryoni
Gene ID	10159.0
SwissProt ID	O75787.The antiserum was produced against synthesized peptide derived from human Caper. AA range:171-220

Application

Dilution Ratio	WB 1:500 - 1:2000 IHC 1:100 - 1:300. IF 1:200 - 1:1000. ELISA: 1:20000. Not yet tested
-----------------------	--

Product Name: Renin Receptor Rabbit Polyclonal Antibody
Catalog #: APRab17018

in other applications.

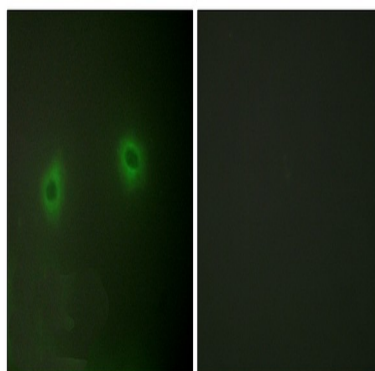
Molecular Weight 39kD

Background

This gene encodes a protein that is associated with adenosine triphosphatases (ATPases). Proton-translocating ATPases have fundamental roles in energy conservation, secondary active transport, acidification of intracellular compartments, and cellular pH homeostasis. There are three classes of ATPases- F, P, and V. The vacuolar (V-type) ATPases have a transmembrane proton-conducting sector and an extramembrane catalytic sector. The encoded protein has been found associated with the transmembrane sector of the V-type ATPases. [provided by RefSeq, Jul 2008],disease:Defects in ATP6AP2 are a cause of mental retardation X-linked with epilepsy (MRXE) [MIM:300423]. MRXE is a syndromic mental retardation. Patients manifest mild to moderate mental retardation associated with epilepsy, delays in motor milestones and speech acquisition in infancy.,function:Functions as a renin and prorenin cellular receptor. May mediate renin-dependent cellular responses by activating ERK1 and ERK2. By increasing the catalytic efficiency of renin in AGT/angiotensinogen conversion to angiotensin I, it may also play a role in the renin-angiotensin system (RAS).,PTM:Phosphorylated.,subunit:Interacts with renin and the vacuolar proton-ATPase.,tissue specificity:Expressed in brain, heart, placenta, liver, kidney and pancreas. Barely detectable in lung and skeletal muscles. In the kidney cortex it is restricted to the mesangium of glomeruli. In the coronary and kidney artery it is expressed in the subendothelium, associated to smooth muscles where it colocalizes with REN. Expressed in vascular structures and by syncytiotrophoblast cells in the mature fetal placenta.,

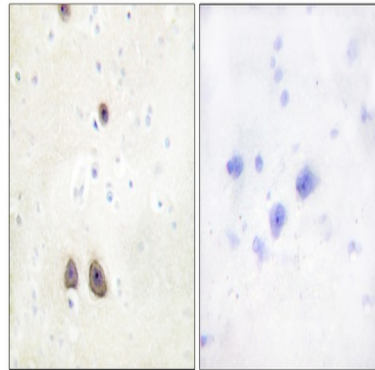
Research Area

Image Data

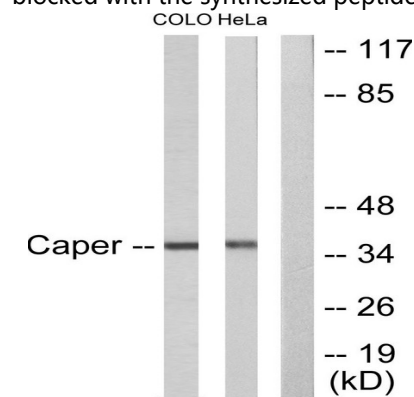


Immunofluorescence analysis of HeLa cells, using Caper Antibody. The picture on the right is blocked with the synthesized peptide.

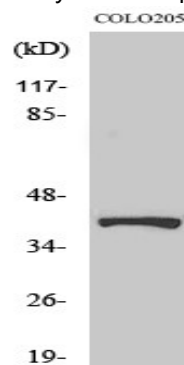
Product Name: Renin Receptor Rabbit Polyclonal Antibody
Catalog #: APRab17018



Immunohistochemistry analysis of paraffin-embedded human brain tissue, using Caper Antibody. The picture on the right is blocked with the synthesized peptide.



Western blot analysis of lysates from COLO205 and HeLa cells, using Caper Antibody. The lane on the right is blocked with the synthesized peptide.



Western Blot analysis of various cells using Renin Receptor Polyclonal Antibody

Note

For research use only.