

---

## Summary

<b>Production Name</b>	RELT Rabbit Polyclonal Antibody
<b>Description</b>	Rabbit Polyclonal Antibody
<b>Host</b>	Rabbit
<b>Application</b>	WB,ELISA
<b>Reactivity</b>	Human,Mouse

## Performance

<b>Conjugation</b>	Unconjugated
<b>Modification</b>	Unmodified
<b>Isotype</b>	IgG
<b>Clonality</b>	Polyclonal
<b>Form</b>	Liquid
<b>Storage</b>	Store at 4°C short term. Aliquot and store at -20°C long term. Avoid freeze/thaw cycles.
<b>Buffer</b>	Liquid in PBS containing 50% glycerol, 0.5% BSA and 0.02% New type preservative N.
<b>Purification</b>	Affinity purification

## Immunogen

<b>Gene Name</b>	RELT
<b>Alternative Names</b>	RELT; TNFRSF19L; Tumor necrosis factor receptor superfamily member 19L; Receptor expressed in lymphoid tissues
<b>Gene ID</b>	84957.0
<b>SwissProt ID</b>	Q969Z4.The antiserum was produced against synthesized peptide derived from human RELT. AA range:381-430

## Application

<b>Dilution Ratio</b>	WB 1:500 - 1:2000. ELISA: 1:40000
<b>Molecular Weight</b>	46kD

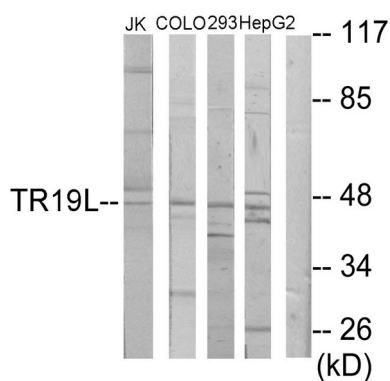
## Background

The protein encoded by this gene is a member of the TNF-receptor superfamily. This receptor is especially abundant in hematologic tissues. It has been shown to activate the NF-kappaB pathway and selectively bind TNF receptor-associated factor 1 (TRAF1). This receptor is capable of stimulating T-cell proliferation in the presence of CD3 signaling, which suggests its regulatory role in immune response. Two alternatively spliced transcript variants of this gene encoding the same protein have been reported. [provided by RefSeq, Jul 2008],function:Mediates activation of NF-kappa-B. May play a role in T-cell activation.,PTM:Phosphorylated in vitro by OXSR1.,similarity:Belongs to the RELT family.,similarity:Contains 1 TNFR-Cys repeat.,subunit:Associates with TRAF1. Interacts with RELL1, RELL2 and OXSR1.,tissue specificity:Highest levels are in spleen, lymph node, thymus, peripheral blood leukocytes, bone marrow and fetal liver. Very low levels in skeletal muscle, testis and colon. Not detected in brain, kidney and pancreas.,

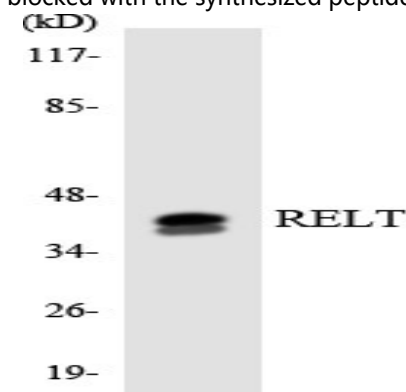
## Research Area

Cytokine-cytokine receptor interaction;

## Image Data



Western blot analysis of lysates from Jurkat, COLO205, 293, and HepG2 cells, using RELT Antibody. The lane on the right is blocked with the synthesized peptide.



Western blot analysis of the lysates from Jurkat cells using RELT antibody.

**Product Name: RELT Rabbit Polyclonal Antibody**  
**Catalog #: APRab17011**

---



**Note**

For research use only.