

Product Name: Relaxin Receptor 3 Rabbit Polyclonal Antibody
Catalog #: APRab17005



Summary

Production Name	Relaxin Receptor 3 Rabbit Polyclonal Antibody
Description	Rabbit Polyclonal Antibody
Host	Rabbit
Application	WB
Reactivity	Human,Mouse,Rat

Performance

Conjugation	Unconjugated
Modification	Unmodified
Isotype	IgG
Clonality	Polyclonal
Form	Liquid
Storage	Store at 4°C short term. Aliquot and store at -20°C long term. Avoid freeze/thaw cycles.
Buffer	Liquid in PBS containing 50% glycerol, 0.5% BSA and 0.02% New type preservative N.
Purification	Affinity purification

Immunogen

Gene Name	RXFP3
Alternative Names	RXFP3; RLN3R1; SALPR; Relaxin-3 receptor 1; RLN3 receptor 1; G protein-coupled receptor SALPR; G-protein coupled receptor GPCR135; Relaxin family peptide receptor 3; Somatostatin- and angiotensin-like peptide receptor
Gene ID	51289.0
SwissProt ID	Q9NSD7.The antiserum was produced against synthesized peptide derived from human RXFP3. AA range:161-210

Application

Dilution Ratio	WB 1:500-2000
Molecular Weight	51kD

Product Name: Relaxin Receptor 3 Rabbit Polyclonal Antibody
Catalog #: APRab17005

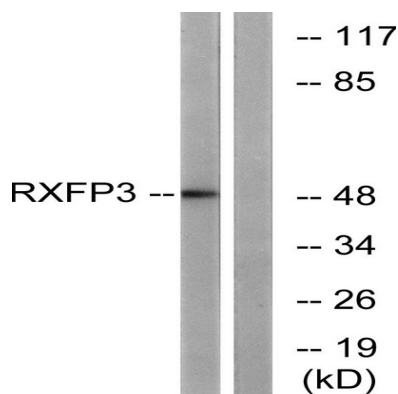


Background

function: Receptor for relaxin-3. Binding of the ligand inhibits cAMP accumulation., similarity: Belongs to the G-protein coupled receptor 1 family., tissue specificity: Expressed predominantly in brain regions. Highest expression in substantia nigra and pituitary, followed by hippocampus, spinal cord, amygdala, caudate nucleus and corpus callosum, quite low level in cerebellum. In peripheral tissues, relatively high levels in adrenal glands, low levels in pancreas, salivary gland, placenta, mammary gland and testis., function: Receptor for relaxin-3. Binding of the ligand inhibits cAMP accumulation., similarity: Belongs to the G-protein coupled receptor 1 family., tissue specificity: Expressed predominantly in brain regions. Highest expression in substantia nigra and pituitary, followed by hippocampus, spinal cord, amygdala, caudate nucleus and corpus callosum, quite low level in cerebellum. In peripheral tissues, relatively high levels in adrenal glands, low levels in pancreas, salivary gland, placenta, mammary gland and testis.,

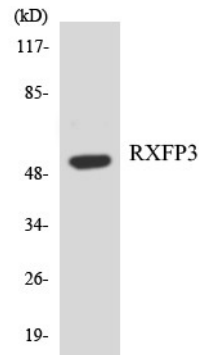
Research Area

Image Data



Western blot analysis of lysates from K562 cells, using RXFP3 Antibody. The lane on the right is blocked with the synthesized peptide.

**Product Name: Relaxin Receptor 3 Rabbit Polyclonal
Antibody**
Catalog #: APRab17005



Western blot analysis of the lysates from Jurkat cells using RAFP3 antibody.

Note

For research use only.