

Product Name: Relaxin Receptor 2 Rabbit Polyclonal Antibody
Catalog #: APRab17004



Summary

Production Name	Relaxin Receptor 2 Rabbit Polyclonal Antibody
Description	Rabbit Polyclonal Antibody
Host	Rabbit
Application	WB,
Reactivity	Human,Mouse,Rat

Performance

Conjugation	Unconjugated
Modification	Unmodified
Isotype	IgG
Clonality	Polyclonal
Form	Liquid
Storage	Store at 4°C short term. Aliquot and store at -20°C long term. Avoid freeze/thaw cycles.
Buffer	Liquid in PBS containing 50% glycerol, 0.5% BSA and 0.02% New type preservative N.
Purification	Affinity purification

Immunogen

Gene Name	RXFP2 RXFP2; GPR106; GREAT; LGR8; Relaxin receptor 2; G-protein coupled receptor 106; G-protein coupled receptor affecting testicular descent; Leucine-rich repeat-containing G-protein coupled receptor 8; Relaxin family peptide receptor 2
Alternative Names	
Gene ID	122042.0
SwissProt ID	Q8WXD0.The antiserum was produced against synthesized peptide derived from human RXFP2. AA range:113-162

Application

Dilution Ratio	WB 1:500-2000
Molecular Weight	86kD

Product Name: Relaxin Receptor 2 Rabbit Polyclonal Antibody
Catalog #: APRab17004



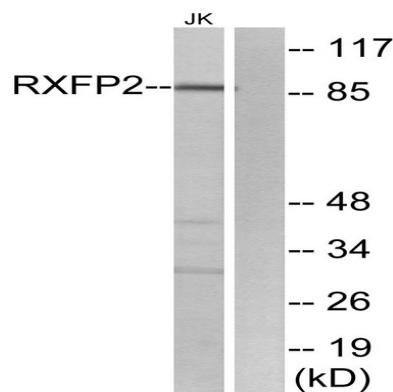
Background

This gene encodes a member of the GPCR (G protein-coupled, 7-transmembrane receptor) family. Mutations in this gene are associated with cryptorchidism. Alternatively spliced transcript variants encoding different isoforms have been found for this gene.[provided by RefSeq, Oct 2009],caution:It is uncertain whether Met-1 or Met-18 is the initiator.,disease:Defects in RXFP2 are a cause of cryptorchidism [MIM:219050]; also known as impaired testicular descent. It is one of the most frequent congenital abnormalities in humans, involving 2-5% of male births. Cryptorchidism is associated with increased risk of infertility and testicular cancer.,function:Receptor for relaxin. The activity of this receptor is mediated by G proteins leading to stimulation of adenylate cyclase and an increase of cAMP. May also be a receptor for Leydig insulin-like peptide (INSL3),similarity:Belongs to the G-protein coupled receptor 1 family.,similarity:Contains 1 LDL-receptor class A domain.,similarity:Contains 10 LRR (leucine-rich) repeats.,tissue specificity:Expressed mainly in the brain, kidney, muscle, testis, thyroid, uterus, peripheral blood cells and bone marrow.,

Research Area

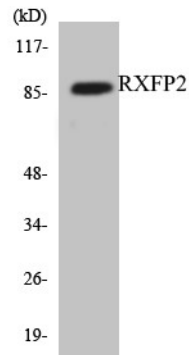
Neuroactive ligand-receptor interaction;

Image Data

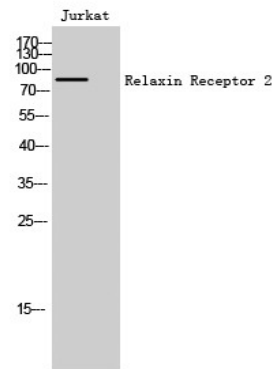


Western blot analysis of lysates from Jurkat cells, using RXFP2 Antibody. The lane on the right is blocked with the synthesized peptide.

Product Name: Relaxin Receptor 2 Rabbit Polyclonal Antibody
Catalog #: APRab17004



Western blot analysis of the lysates from HUVEC cells using RAFP2 antibody.



Western Blot analysis of Jurkat cells using Relaxin Receptor 2 Polyclonal Antibody

Note

For research use only.