

Summary

Production Name	Relaxin 3 Rabbit Polyclonal Antibody
Description	Rabbit Polyclonal Antibody
Host	Rabbit
Application	IHC,ELISA
Reactivity	Human,Rat,Mouse

Performance

Conjugation	Unconjugated
Modification	Unmodified
Isotype	IgG
Clonality	Polyclonal
Form	Liquid
Storage	Store at 4°C short term. Aliquot and store at -20°C long term. Avoid freeze/thaw cycles.
Buffer	Liquid in PBS containing 50% glycerol, 0.5% BSA and 0.02% New type preservative N.
Purification	Affinity purification

Immunogen

Gene Name	RLN3
Alternative Names	RLN3; INSL7; RXN3; ZINS4; Relaxin-3; Insulin-like peptide INSL7; Insulin-like peptide 7; Prorelaxin H3
Gene ID	117579.0
SwissProt ID	Q8WXF3.Synthesized peptide derived from the Internal region of human Relaxin 3.

Application

Dilution Ratio	IHC 1:100-1:300 ELISA: 1:40000
Molecular Weight	

Background

relaxin 3(RLN3) Homo sapiens This gene encodes a member of the relaxin family of insulin-like hormones that is

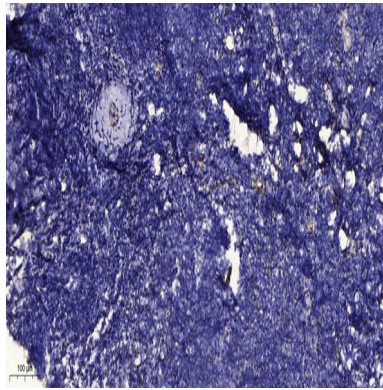
Product Name: Relaxin 3 Rabbit Polyclonal Antibody
Catalog #: APRab17003



expressed predominantly in the brain and plays a role in physiological processes such as stress, memory and appetite regulation. The encoded protein is a precursor that is proteolytically processed to generate a heterodimeric mature form consisting A and B chains interlinked by disulfide bonds. Alternative splicing results in multiple transcript variants encoding different isoforms. [provided by RefSeq, Jul 2015],function:May play a role in neuropeptide signaling processes. Ligand for LGR7, relaxin-3 receptor-1 (GPCR135) and relaxin-3 receptor-2 (GPCR142).,similarity:Belongs to the insulin family.,subunit:Heterodimer of a B chain and an A chain linked by two disulfide bonds.,

Research Area

Image Data



Immunohistochemical analysis of paraffin-embedded human tonsil. 1, Antibody was diluted at 1:200 (4° overnight) . 2, Tris-EDTA,pH9.0 was used for antigen retrieval. 3,Secondary antibody was diluted at 1:200 (room temperature, 30min) .

Note

For research use only.