

---

## Summary

<b>Production Name</b>	Reg IV Rabbit Polyclonal Antibody
<b>Description</b>	Rabbit Polyclonal Antibody
<b>Host</b>	Rabbit
<b>Application</b>	IHC,ELISA
<b>Reactivity</b>	Human,Rat,Mouse

## Performance

<b>Conjugation</b>	Unconjugated
<b>Modification</b>	Unmodified
<b>Isotype</b>	IgG
<b>Clonality</b>	Polyclonal
<b>Form</b>	Liquid
<b>Storage</b>	Store at 4°C short term. Aliquot and store at -20°C long term. Avoid freeze/thaw cycles.
<b>Buffer</b>	Liquid in PBS containing 50% glycerol, 0.5% BSA and 0.02% New type preservative N.
<b>Purification</b>	Affinity purification

## Immunogen

<b>Gene Name</b>	REG4
<b>Alternative Names</b>	REG4; GISP; RELP; Regenerating islet-derived protein 4; REG-4; Gastrointestinal secretory protein; REG-like protein; Regenerating islet-derived protein IV; Reg IV
<b>Gene ID</b>	83998.0
<b>SwissProt ID</b>	Q9BYZ8.Synthesized peptide derived from the Internal region of human Reg IV.

## Application

<b>Dilution Ratio</b>	IHC 1:100 - 1:300. ELISA: 1:40000..
<b>Molecular Weight</b>	

## Background

---

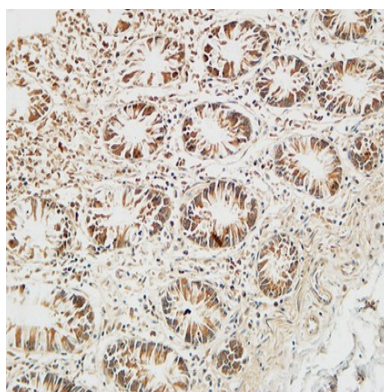
**Product Name: Reg IV Rabbit Polyclonal Antibody**  
**Catalog #: APRab16998**



function:May be involved in inflammatory and metaplastic responses of the gastrointestinal epithelium.,induction:Up-regulated by mucosal injury from active Crohn's disease or ulcerative colitis. Up-regulated in colorectal tumors. Up-regulated in epithelial cells at regenerating margins of peptic ulcers in the stomach and duodenum.,online information:Regenerating protein IV,similarity:Contains 1 C-type lectin domain.,tissue specificity:Highly expressed in the gastrointestinal tract including the duodenum, jejunum, ileum, ileocecum, appendix, descending colon, pancreas and small intestine. Weakly expressed in normal colon and stomach. Strongly expressed in most colorectal tumors than in normal colon. Preferentially expressed in mucinous tumors and in some cases neuro-endocrine tumors. Expressed in mucus-secreting cells and enterocyte-like cells. In small intestine expressed at the basal perinuclear zone of goblet cells.,function:May be involved in inflammatory and metaplastic responses of the gastrointestinal epithelium.,induction:Up-regulated by mucosal injury from active Crohn's disease or ulcerative colitis. Up-regulated in colorectal tumors. Up-regulated in epithelial cells at regenerating margins of peptic ulcers in the stomach and duodenum.,online information:Regenerating protein IV,similarity:Contains 1 C-type lectin domain.,tissue specificity:Highly expressed in the gastrointestinal tract including the duodenum, jejunum, ileum, ileocecum, appendix, descending colon, pancreas and small intestine. Weakly expressed in normal colon and stomach. Strongly expressed in most colorectal tumors than in normal colon. Preferentially expressed in mucinous tumors and in some cases neuro-endocrine tumors. Expressed in mucus-secreting cells and enterocyte-like cells. In small intestine expressed at the basal perinuclear zone of goblet cells.,

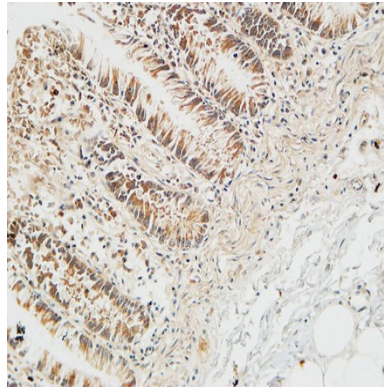
## Research Area

## Image Data

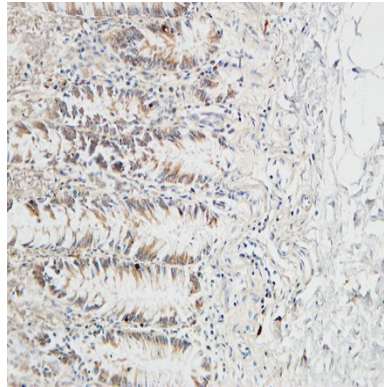


Immunohistochemical analysis of paraffin-embedded Human colon. 1, Antibody was diluted at 1:100 (4°,overnight) . 2, High-pressure and temperature EDTA, pH8.0 was used for antigen retrieval. 3,Secondary antibody was diluted at 1:200 (room temperature, 30min) .

**Product Name: Reg IV Rabbit Polyclonal Antibody**  
**Catalog #: APRab16998**



Immunohistochemical analysis of paraffin-embedded Human colon. 1, Antibody was diluted at 1:100 (4°,overnight) . 2, High-pressure and temperature EDTA, pH8.0 was used for antigen retrieval. 3,Secondary antibody was diluted at 1:200 (room temperature, 30min) .



Immunohistochemical analysis of paraffin-embedded Human colon. 1, Antibody was diluted at 1:100 (4°,overnight) . 2, High-pressure and temperature EDTA, pH8.0 was used for antigen retrieval. 3,Secondary antibody was diluted at 1:200 (room temperature, 30min) .

### **Note**

For research use only.