

Product Name: Rec8 Rabbit Polyclonal Antibody
Catalog #: APRab16989



Summary

Production Name	Rec8 Rabbit Polyclonal Antibody
Description	Rabbit Polyclonal Antibody
Host	Rabbit
Application	WB
Reactivity	Human,Rat,Mouse

Performance

Conjugation	Unconjugated
Modification	Unmodified
Isotype	IgG
Clonality	Polyclonal
Form	Liquid
Storage	Store at 4°C short term. Aliquot and store at -20°C long term. Avoid freeze/thaw cycles.
Buffer	Liquid in PBS containing 50% glycerol, 0.5% BSA and 0.02% New type preservative N.
Purification	Affinity purification

Immunogen

Gene Name	REC8
Alternative Names	REC8; REC8L1; Meiotic recombination protein REC8 homolog; Cohesin Rec8p
Gene ID	9985.0
SwissProt ID	O95072.The antiserum was produced against synthesized peptide derived from human REC8. AA range:154-203

Application

Dilution Ratio	WB 1:500-2000; ELISA 2000-20000
Molecular Weight	62kD

Background

This gene encodes a member of the kleisin family of SMC (structural maintenance of chromosome) protein partners. The

Product Name: Rec8 Rabbit Polyclonal Antibody
Catalog #: APRab16989

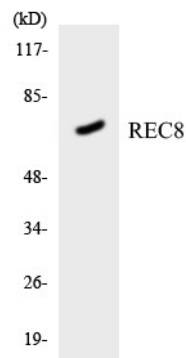


protein localizes to the axial elements of chromosomes during meiosis in both oocytes and spermatocytes. In the mouse, the homologous protein is a key component of the meiotic cohesion complex, which regulates sister chromatid cohesion and recombination between homologous chromosomes. Multiple alternatively spliced variants, encoding the same protein, have been found for this gene. [provided by RefSeq, Jul 2008],function:Required during meiosis for separation of sister chromatids and homologous chromosomes. Proteolytic cleavage of REC8 on chromosome arms by separin during anaphase I allows for homologous chromosome separation in meiosis I and cleavage of REC8 on centromeres during anaphase II allows for sister chromatid separation in meiosis II.,PTM:Phosphorylated.,similarity:Belongs to the rad21 family.,subcellular location:In meiotic chromosomes, localized along axial elements in prophase from the leptotene to diplotene stages. At later prophase stages, diakinesis and metaphase I, localized along interstitial axes of chromosomes including both centromere and arm regions. No longer detected in arm regions in anaphase I but persists on centromere regions until metaphase II.,subunit:Interacts in both phosphorylated and unphosphorylated forms with SMC3, SYCP3 and SMC1B but not with SMC1A. Also interacts with RAD51.,tissue specificity:Expressed in testis and thymus.,

Research Area

Oocyte meiosis;

Image Data



Western blot analysis of the lysates from HT-29 cells using REC8 antibody.

Note

For research use only.