

Summary

Production Name	RCL1 Rabbit Polyclonal Antibody
Description	Rabbit Polyclonal Antibody
Host	Rabbit
Application	WB,
Reactivity	Human,Mouse,Rat

Performance

Conjugation	Unconjugated
Modification	Unmodified
Isotype	IgG
Clonality	Polyclonal
Form	Liquid
Storage	Store at 4°C short term. Aliquot and store at -20°C long term. Avoid freeze/thaw cycles.
Buffer	Liquid in PBS containing 50% glycerol, 0.5% BSA and 0.02% New type preservative N.
Purification	Affinity purification

Immunogen

Gene Name	RCL1
Alternative Names	RCL1; RNAC; RPC2; RPCL1; RTC2; HSPC338; RNA 3'-terminal phosphate cyclase-like protein
Gene ID	10171.0
SwissProt ID	Q9Y2P8.The antiserum was produced against synthesized peptide derived from human RCL1. AA range:324-373

Application

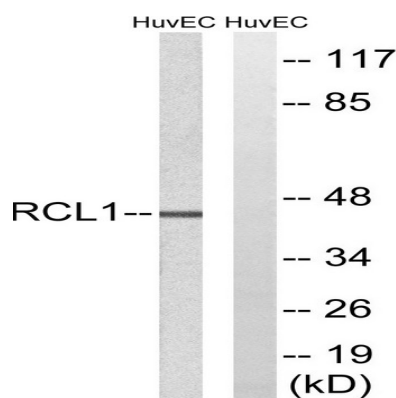
Dilution Ratio	WB 1:500-2000
Molecular Weight	41kD

Background

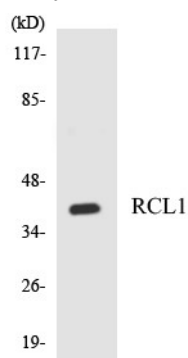
function:Does not have cyclase activity. Plays a role in 40S-ribosomal-subunit biogenesis in the early pre-rRNA processing steps at sites A0, A1 and A2 that are required for proper maturation of the 18S RNA.,similarity:Belongs to the RNA 3'-terminal cyclase family. Type 2 subfamily.,function:Does not have cyclase activity. Plays a role in 40S-ribosomal-subunit biogenesis in the early pre-rRNA processing steps at sites A0, A1 and A2 that are required for proper maturation of the 18S RNA.,similarity:Belongs to the RNA 3'-terminal cyclase family. Type 2 subfamily.,

Research Area

Image Data

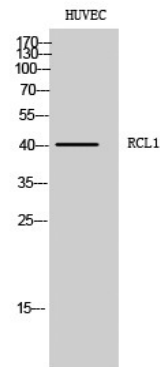


Western blot analysis of lysates from HUVEC cells, using RCL1 Antibody. The lane on the right is blocked with the synthesized peptide.



Western blot analysis of the lysates from HepG2 cells using RCL1 antibody.

Product Name: RCL1 Rabbit Polyclonal Antibody
Catalog #: APRab16983



Western Blot analysis of HUVEC cells using RCL1 Polyclonal Antibody cells nucleus extracted by Minute TM Cytoplasmic and Nuclear Fractionation kit (SC-003, Inventbiotech, MN, USA) .

Note

For research use only.