

**Product Name: RCL Rabbit Polyclonal Antibody**  
**Catalog #: APRab16982**



## Summary

<b>Production Name</b>	RCL Rabbit Polyclonal Antibody
<b>Description</b>	Rabbit Polyclonal Antibody
<b>Host</b>	Rabbit
<b>Application</b>	WB,
<b>Reactivity</b>	Human,Rat,Mouse

## Performance

<b>Conjugation</b>	Unconjugated
<b>Modification</b>	Unmodified
<b>Isotype</b>	IgG
<b>Clonality</b>	Polyclonal
<b>Form</b>	Liquid
<b>Storage</b>	Store at 4°C short term. Aliquot and store at -20°C long term. Avoid freeze/thaw cycles.
<b>Buffer</b>	Liquid in PBS containing 50% glycerol, 0.5% BSA and 0.02% New type preservative N.
<b>Purification</b>	Affinity purification

## Immunogen

<b>Gene Name</b>	RCL
<b>Alternative Names</b>	RCL; C6orf108; Deoxyribonucleoside 5'-monophosphate N-glycosidase; c-Myc-responsive protein Rcl
<b>Gene ID</b>	10591.0
<b>SwissProt ID</b>	O43598.The antiserum was produced against synthesized peptide derived from human RCL. AA range:1-50

## Application

<b>Dilution Ratio</b>	WB 1:500-2000
<b>Molecular Weight</b>	22kD

**Product Name: RCL Rabbit Polyclonal Antibody**  
**Catalog #: APRab16982**

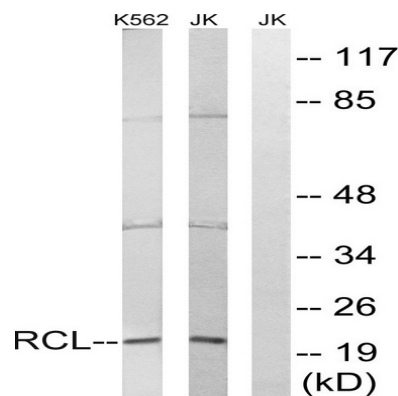


## Background

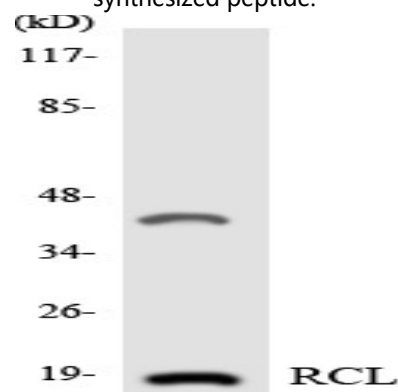
This gene was identified on the basis of its stimulation by c-Myc protein. The latter is a transcription factor that participates in the regulation of cell proliferation, differentiation, and apoptosis. The exact function of this gene is not known but studies in rat suggest a role in cellular proliferation and c-Myc-mediated transformation. Two alternative transcripts encoding different proteins have been described. [provided by RefSeq, Jul 2008],caution:The sequence shown here is derived from an Ensembl automatic analysis pipeline and should be considered as preliminary data.,function:May play a role during cellular proliferation and c-Myc-mediated transformation.,tissue specificity:Expression is elevated in lymphoid cells that overexpress c-Myc.,

## Research Area

## Image Data

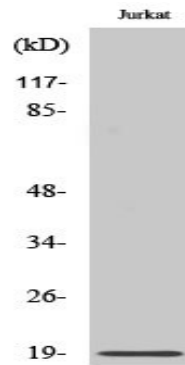


Western blot analysis of lysates from Jurkat and K562 cells, using RCL Antibody. The lane on the right is blocked with the synthesized peptide.



Western blot analysis of the lysates from 293 cells using RCL antibody.

**Product Name: RCL Rabbit Polyclonal Antibody**  
**Catalog #: APRab16982**



Western Blot analysis of various cells using RCL Polyclonal Antibody

**Note**

For research use only.