

Summary

Production Name	RBM26 Rabbit Polyclonal Antibody
Description	Rabbit Polyclonal Antibody
Host	Rabbit
Application	WB
Reactivity	Human,Mouse

Performance

Conjugation	Unconjugated
Modification	Unmodified
Isotype	IgG
Clonality	Polyclonal
Form	Liquid
Storage	Store at 4°C short term. Aliquot and store at -20°C long term. Avoid freeze/thaw cycles.
Buffer	Liquid in PBS containing 50% glycerol, 0.5% BSA and 0.02% New type preservative N.
Purification	Affinity purification

Immunogen

Gene Name	RBM26
Alternative Names	RBM26; C13orf10; RNA-binding protein 26; CTCL tumor antigen se70-2; RNA-binding motif protein 26
Gene ID	64062.0
SwissProt ID	Q5T8P6.The antiserum was produced against synthesized peptide derived from human RBM26. AA range:711-760

Application

Dilution Ratio	WB 1:500-1:2000. ELISA: 1:10000.
Molecular Weight	113kD

Background

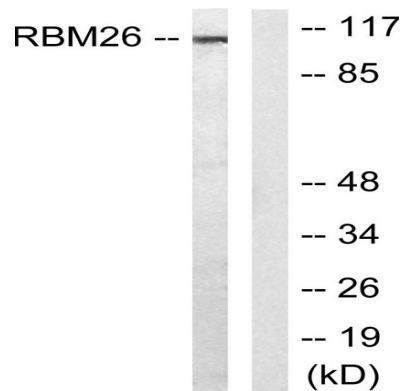
Product Name: RBM26 Rabbit Polyclonal Antibody
Catalog #: APRab16954



similarity:Contains 1 C3H1-type zinc finger.,similarity:Contains 2 RRM (RNA recognition motif) domains.,similarity:Contains 1 C3H1-type zinc finger.,similarity:Contains 2 RRM (RNA recognition motif) domains.,

Research Area

Image Data



Western blot analysis of lysates from Jurkat cells, using RBM26 Antibody. The lane on the right is blocked with the synthesized peptide.

Note

For research use only.