

---

## Summary

|                        |                                   |
|------------------------|-----------------------------------|
| <b>Production Name</b> | RASSF2 Rabbit Polyclonal Antibody |
| <b>Description</b>     | Rabbit Polyclonal Antibody        |
| <b>Host</b>            | Rabbit                            |
| <b>Application</b>     | WB                                |
| <b>Reactivity</b>      | Human,Mouse,Rat                   |

## Performance

|                     |  |
|---------------------|--|
| <b>Conjugation</b>  | Unconjugated   |
| <b>Modification</b> | Unmodified   |
| <b>Isotype</b>      | IgG  |
| <b>Clonality</b>    | Polyclonal   |
| <b>Form</b>         | Liquid   |
| <b>Storage</b>      | Store at 4°C short term. Aliquot and store at -20°C long term. Avoid freeze/thaw cycles. |
| <b>Buffer</b>       | Liquid in PBS containing 50% glycerol, 0.5% BSA and 0.02% New type preservative N.       |
| <b>Purification</b> | Affinity purification  |

## Immunogen

|                          |   |
|--------------------------|---|
| <b>Gene Name</b>         | RASSF2  |
| <b>Alternative Names</b> | RASSF2; KIAA0168; Ras association domain-containing protein 2   |
| <b>Gene ID</b>           | 9770.0  |
| <b>SwissProt ID</b>      | P50749.The antiserum was produced against synthesized peptide derived from human RASSF2. AA range:109-158 |

## Application

|                         |               |
|-------------------------|---------------|
| <b>Dilution Ratio</b>   | WB 1:500-2000 |
| <b>Molecular Weight</b> | 36kD          |

## Background

---

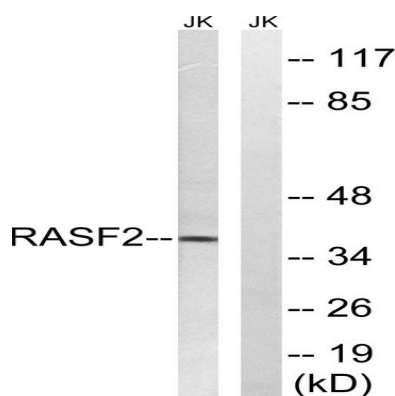
**Product Name: RASSF2 Rabbit Polyclonal Antibody**  
**Catalog #: APRab16922**



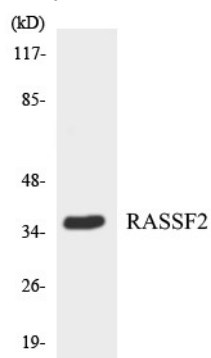
This gene encodes a protein that contains a Ras association domain. Similar to its cattle and sheep counterparts, this gene is located near the prion gene. Two alternatively spliced transcripts encoding the same isoform have been reported. [provided by RefSeq, Jul 2008],function:Potential tumor suppressor. Acts as a KRAS-specific effector protein. May promote apoptosis and cell cycle arrest.,similarity:Contains 1 Ras-associating domain.,similarity:Contains 1 SARAH domain.,subunit:Interacts directly with activated KRAS in a GTP-dependent manner.,tissue specificity:Widely expressed with highest levels in brain, placenta, peripheral blood and lung. Frequently down-regulated in lung tumor cell lines.,

## Research Area

## Image Data



Western blot analysis of lysates from Jurkat cells, using RASSF2 Antibody. The lane on the right is blocked with the synthesized peptide.



Western blot analysis of the lysates from HepG2 cells using RASSF2 antibody.

## Note

For research use only.