

Summary

Production Name	RASL10B Rabbit Polyclonal Antibody
Description	Rabbit Polyclonal Antibody
Host	Rabbit
Application	WB
Reactivity	Human,Mouse

Performance

Conjugation	Unconjugated
Modification	Unmodified
Isotype	IgG
Clonality	Polyclonal
Form	Liquid
Storage	Store at 4°C short term. Aliquot and store at -20°C long term. Avoid freeze/thaw cycles.
Buffer	Liquid in PBS containing 50% glycerol, 0.5% BSA and 0.02% New type preservative N.
Purification	Affinity purification

Immunogen

Gene Name	RASL10B
Alternative Names	RASL10B; Ras-like protein family member 10B; Ras-like protein VTS58635; Ras-related protein 17; RRP17
Gene ID	91608.0
SwissProt ID	Q96S79.Synthesized peptide derived from RASL10B . at AA range: 80-160

Application

Dilution Ratio	WB 1:500-2000
Molecular Weight	22kD

Background

similarity:Belongs to the small GTPase superfamily. Ras family.,similarity:Belongs to the small GTPase superfamily. Ras

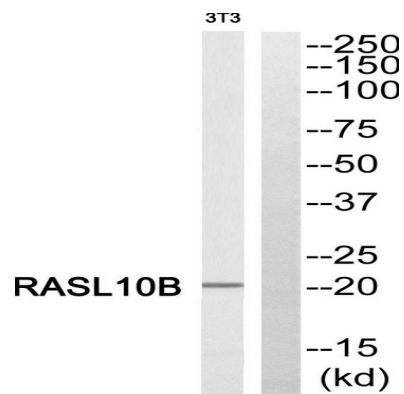
Product Name: RASL10B Rabbit Polyclonal Antibody
Catalog #: APRab16916



family,

Research Area

Image Data



Western blot analysis of RASL10B Antibody. The lane on the right is blocked with the RASL10B peptide.

Note

For research use only.