

Product Name: RAP1 Rabbit Polyclonal Antibody
Catalog #: APRab16892



Summary

Production Name	RAP1 Rabbit Polyclonal Antibody
Description	Rabbit Polyclonal Antibody
Host	Rabbit
Application	WB
Reactivity	Human,Rat,Mouse

Performance

Conjugation	Unconjugated
Modification	Unmodified
Isotype	IgG
Clonality	Polyclonal
Form	Liquid
Storage	Store at 4°C short term. Aliquot and store at -20°C long term. Avoid freeze/thaw cycles.
Buffer	Liquid in PBS containing 50% glycerol, 0.5% BSA and 0.02% New type preservative N.
Purification	Affinity purification

Immunogen

Gene Name	TERF2IP TERF2IP; DRIP5; RAP1; PP8000; Telomeric repeat-binding factor 2-interacting protein 1;
Alternative Names	TERF2-interacting telomeric protein 1; TRF2-interacting telomeric protein 1; Dopamine receptor-interacting protein 5; Repressor/activator protein 1 homol
Gene ID	54386.0
SwissProt ID	Q9NYB0.The antiserum was produced against synthesized peptide derived from human RAP1. AA range:203-252

Application

Dilution Ratio	WB 1:500-2000
Molecular Weight	55kD

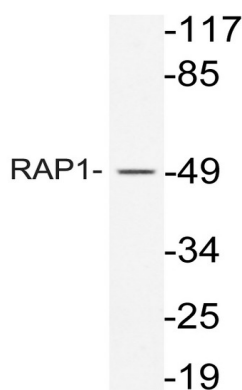
Background

The gene encodes a protein that is part of a complex involved in telomere length regulation. Pseudogenes are present on chromosomes 5 and 22. [provided by RefSeq, Apr 2010],function:May play a role in telomere length regulation. Component of the shelterin complex (telosome) that is involved in the regulation of telomere length and protection. Shelterin associates with arrays of double-stranded TTAGGG repeats added by telomerase and protects chromosome ends; without its protective activity, telomeres are no longer hidden from the DNA damage surveillance and chromosome ends are inappropriately processed by DNA repair pathways.,miscellaneous:Recruited to telomeres by TRF2; seemingly it does not directly bind to DNA itself.,PTM:Phosphorylated upon DNA damage, probably by ATM or ATR.,sequence caution:Translated as Glu.,similarity:Contains 1 BRCT domain.,similarity:Contains 1 Myb-like domain.,subcellular location:Colocalizes with telomeric DNA in interphase and metaphase cells.,subunit:Homodimer. Component of the shelterin complex (telosome) composed of TERF1, TERF2, TINF2, TERF2IP ACD and POT1. Binds to TRF2 (but not TRF1) with its C-terminus.,tissue specificity:Ubiquitous. Highly expressed.,

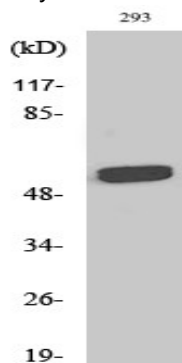
Research Area

B_Cell_Antigen; Adherens_Junction

Image Data



Western blot analysis of lysate from 293 cells, using RAP1 antibody.



Product Name: RAP1 Rabbit Polyclonal Antibody
Catalog #: APRab16892



Western Blot analysis of various cells using RAP1 Polyclonal Antibody diluted at 1 : 500

Note

For research use only.