

## Summary

<b>Production Name</b>	Rap 2C Rabbit Polyclonal Antibody
<b>Description</b>	Rabbit Polyclonal Antibody
<b>Host</b>	Rabbit
<b>Application</b>	WB,
<b>Reactivity</b>	Human,Mouse

## Performance

<b>Conjugation</b>	Unconjugated
<b>Modification</b>	Unmodified
<b>Isotype</b>	IgG
<b>Clonality</b>	Polyclonal
<b>Form</b>	Liquid
<b>Storage</b>	Store at 4°C short term. Aliquot and store at -20°C long term. Avoid freeze/thaw cycles.
<b>Buffer</b>	Liquid in PBS containing 50% glycerol, 0.5% BSA and 0.02% New type preservative N.
<b>Purification</b>	Affinity purification

## Immunogen

<b>Gene Name</b>	RAP2C
<b>Alternative Names</b>	RAP2C; Ras-related protein Rap-2c
<b>Gene ID</b>	57826.0
<b>SwissProt ID</b>	Q9Y3L5.The antiserum was produced against synthesized peptide derived from human RAP2C. AA range:97-146

## Application

<b>Dilution Ratio</b>	WB 1:500-2000
<b>Molecular Weight</b>	26kD

## Background

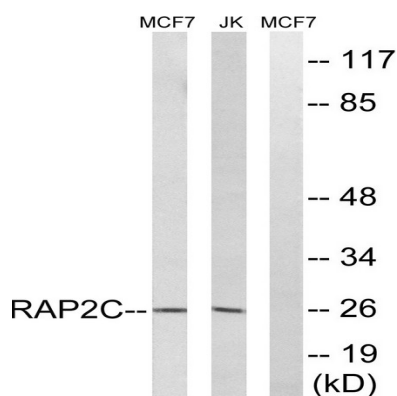
**Product Name: Rap 2C Rabbit Polyclonal Antibody**  
**Catalog #: APRab16890**



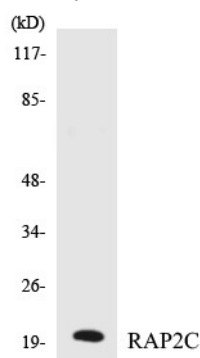
The protein encoded by this gene is a member of the Ras-related protein subfamily of the Ras GTPase superfamily. Members of this family are small GTPases that act as molecular switches to regulate cellular proliferation, differentiation, and apoptosis. This protein has been reported to activate in vitro transcriptional activity of the serum response element. Alternative splicing results in multiple transcript variants. [provided by RefSeq, Sep 2012],similarity:Belongs to the small GTPase superfamily. Ras family.,tissue specificity:Expressed in mononuclear leukocytes and megakaryocytes. Not detected in platelets.,

## Research Area

## Image Data

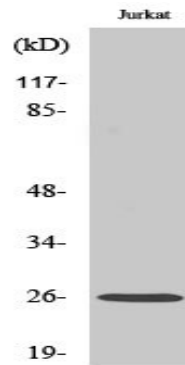


Western blot analysis of lysates from Jurkat and MCF-7 cells, using RAP2C Antibody. The lane on the right is blocked with the synthesized peptide.



Western blot analysis of the lysates from K562 cells using RAP2C antibody.

**Product Name: Rap 2C Rabbit Polyclonal Antibody**  
**Catalog #: APRab16890**



Western Blot analysis of various cells using Rap 2C Polyclonal Antibody diluted at 1: 500

**Note**

For research use only.