

Product Name: Raftlin Rabbit Polyclonal Antibody
Catalog #: APRab16858



Summary

Production Name	Raftlin Rabbit Polyclonal Antibody
Description	Rabbit Polyclonal Antibody
Host	Rabbit
Application	WB,
Reactivity	Human,Rat,Mouse

Performance

Conjugation	Unconjugated
Modification	Unmodified
Isotype	IgG
Clonality	Polyclonal
Form	Liquid
Storage	Store at 4°C short term. Aliquot and store at -20°C long term. Avoid freeze/thaw cycles.
Buffer	Liquid in PBS containing 50% glycerol, 0.5% BSA and 0.02% New type preservative N.
Purification	Affinity purification

Immunogen

Gene Name	RFTN1
Alternative Names	RFTN1; KIAA0084; MIG2; Raftlin; Cell migration-inducing gene 2 protein; Raft-linking protein
Gene ID	23180.0
SwissProt ID	Q14699.The antiserum was produced against synthesized peptide derived from human RFTN1. AA range:432-481

Application

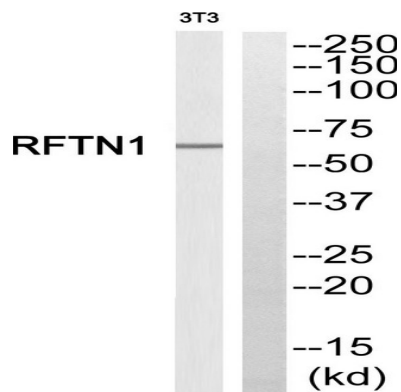
Dilution Ratio	WB 1:500-2000
Molecular Weight	65kD

Background

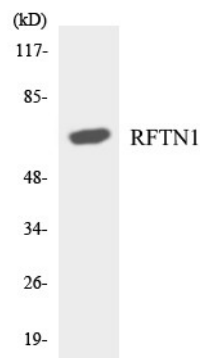
function: May play a pivotal role in the formation and/or maintenance of lipid rafts. May regulate B-cell antigen receptor-mediated signaling., similarity: Belongs to the raftlin family., subcellular location: Associates with lipid rafts., tissue specificity: Specifically expressed by B-cells (at protein level)., function: May play a pivotal role in the formation and/or maintenance of lipid rafts. May regulate B-cell antigen receptor-mediated signaling., similarity: Belongs to the raftlin family., subcellular location: Associates with lipid rafts., tissue specificity: Specifically expressed by B-cells (at protein level).

Research Area

Image Data

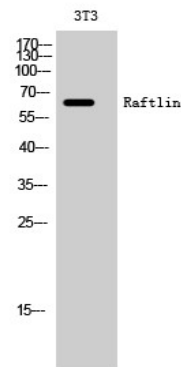


Western blot analysis of RFTN1 Antibody. The lane on the right is blocked with the RFTN1 peptide.



Western blot analysis of the lysates from RAW264.7 cells using RFTN1 antibody.

Product Name: Raftlin Rabbit Polyclonal Antibody
Catalog #: APRab16858



Western Blot analysis of 3T3 cells using Raftlin Polyclonal Antibody

Note

For research use only.