
Summary

Production Name	Radixin Rabbit Polyclonal Antibody
Description	Rabbit Polyclonal Antibody
Host	Rabbit
Application	WB,
Reactivity	Human,Mouse,Rat

Performance

Conjugation	Unconjugated
Modification	Unmodified
Isotype	IgG
Clonality	Polyclonal
Form	Liquid
Storage	Store at 4°C short term. Aliquot and store at -20°C long term. Avoid freeze/thaw cycles.
Buffer	Liquid in PBS containing 50% glycerol, 0.5% BSA and 0.02% New type preservative N.
Purification	Affinity purification

Immunogen

Gene Name	RDX
Alternative Names	RDX; Radixin
Gene ID	5962.0
SwissProt ID	P35241.The antiserum was produced against synthesized peptide derived from human RDX. AA range:142-191

Application

Dilution Ratio	WB 1:500-2000;; ELISA 2000-20000
Molecular Weight	69kD

Background

Product Name: Radixin Rabbit Polyclonal Antibody
Catalog #: APRab16854

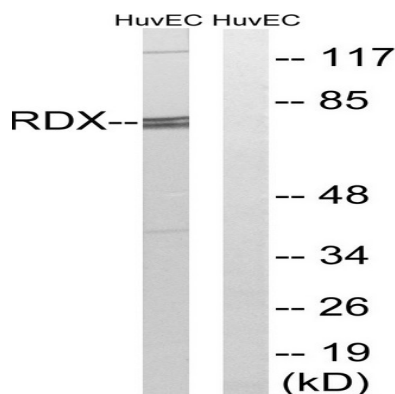


Radixin is a cytoskeletal protein that may be important in linking actin to the plasma membrane. It is highly similar in sequence to both ezrin and moesin. The radixin gene has been localized by fluorescence in situ hybridization to 11q23. A truncated version representing a pseudogene (RDXP2) was assigned to Xp21.3. Another pseudogene that seemed to lack introns (RDXP1) was mapped to 11p by Southern and PCR analyses. Multiple alternatively spliced transcript variants encoding different isoforms have been found for this gene. [provided by RefSeq, May 2012],disease:Defects in RDX are the cause of non-syndromic sensorineural deafness autosomal recessive type 24 (DFNB24) [MIM:611022]. DFNB24 is a form of sensorineural hearing loss. Sensorineural deafness results from damage to the neural receptors of the inner ear, the nerve pathways to the brain, or the area of the brain that receives sound information.,domain:The N-terminal domain interacts with the C-terminal domain of LAYN. An interdomain interaction between its N-terminal and C-terminal domains inhibits its ability to bind LAYN. In the presence of acidic phospholipids, the interdomain interaction is inhibited and this enhances binding to LAYN.,function:Probably plays a crucial role in the binding of the barbed end of actin filaments to the plasma membrane.,PTM:Phosphorylated by tyrosine-protein kinases.,similarity:Contains 1 FERM domain.,subcellular location:Highly concentrated in the undercoat of the cell-to-cell adherens junction and the cleavage furrow in the interphase and mitotic phase, respectively.,subunit:Binds SLC9A3R1. Interacts with NHERF1, NHERF2, LAYN, MME/NEP and ICAM2.,

Research Area

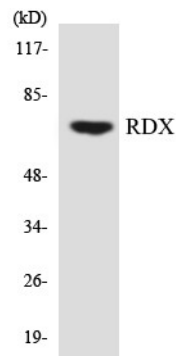
Regulates Actin and Cytoskeleton;

Image Data

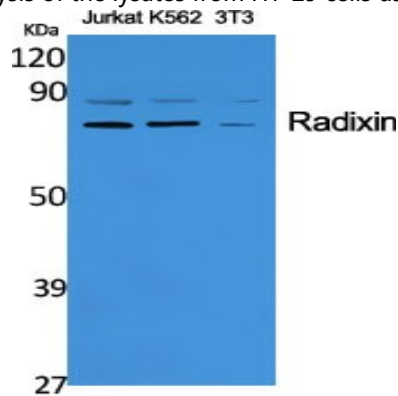


Western blot analysis of lysates from HUVEC cells, using RDX Antibody. The lane on the right is blocked with the synthesized peptide.

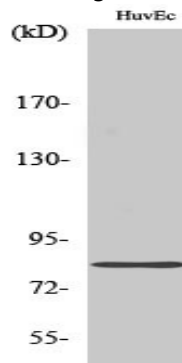
Product Name: Radixin Rabbit Polyclonal Antibody
Catalog #: APRab16854



Western blot analysis of the lysates from HT-29 cells using RDX antibody.



Western Blot analysis of various cells using Radixin Polyclonal Antibody diluted at 1: 2000



Western Blot analysis of HuvEc cells using Radixin Polyclonal Antibody diluted at 1: 2000

Note

For research use only.