

Summary

Production Name	Rabr Rabbit Polyclonal Antibody
Description	Rabbit Polyclonal Antibody
Host	Rabbit
Application	WB
Reactivity	Human,Mouse

Performance

Conjugation	Unconjugated
Modification	Unmodified
Isotype	IgG
Clonality	Polyclonal
Form	Liquid
Storage	Store at 4°C short term. Aliquot and store at -20°C long term. Avoid freeze/thaw cycles.
Buffer	Liquid in PBS containing 50% glycerol, 0.5% BSA and 0.02% New type preservative N.
Purification	Affinity purification

Immunogen

Gene Name	AGFG2
Alternative Names	AGFG2; HRBL; RABR; Arf-GAP domain and FG repeat-containing protein 2; HIV-1 Rev-binding protein-like protein; Rev/Rex activation domain-binding protein related; RAB-R
Gene ID	3268.0
SwissProt ID	O95081.The antiserum was produced against synthesized peptide derived from human AGFG2. AA range:91-140

Application

Dilution Ratio	WB 1:500-2000;ELISA 2000-20000
Molecular Weight	49kD

Background

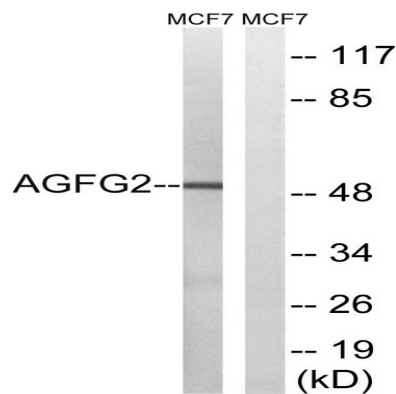
Product Name: Rabr Rabbit Polyclonal Antibody
Catalog #: APRab16819



ArfGAP with FG repeats 2(AGFG2) Homo sapiens This gene is a member of the HIV-1 Rev binding protein (HRB) family and encodes a protein with one Arf-GAP zinc finger domain, several phe-gly (FG) motifs, and four asn-pro-phe (NPF) motifs. This protein interacts with Eps15 homology (EH) domains and plays a role in the Rev export pathway, which mediates the nucleocytoplasmic transfer of proteins and RNAs. Alternatively spliced transcript variants have been described, but their biological validity has not been determined. [provided by RefSeq, Feb 2013],domain:Contains FG repeats and 4 N-P-F repeats.,similarity:Contains 1 Arf-GAP domain.,subunit:Interacts with EPS15R.,

Research Area

Image Data



Western blot analysis of lysates from MCF-7 cells, using AGFG2 Antibody. The lane on the right is blocked with the synthesized peptide.

Note

For research use only.