

**Product Name: RAB32 Rabbit Polyclonal Antibody**  
**Catalog #: APRab16785**



## Summary

<b>Production Name</b>	RAB32 Rabbit Polyclonal Antibody
<b>Description</b>	Rabbit Polyclonal Antibody
<b>Host</b>	Rabbit
<b>Application</b>	WB
<b>Reactivity</b>	Human,Mouse

## Performance

<b>Conjugation</b>	Unconjugated
<b>Modification</b>	Unmodified
<b>Isotype</b>	IgG
<b>Clonality</b>	Polyclonal
<b>Form</b>	Liquid
<b>Storage</b>	Store at 4°C short term. Aliquot and store at -20°C long term. Avoid freeze/thaw cycles.
<b>Buffer</b>	Liquid in PBS containing 50% glycerol, and 0.02% New type preservative N.
<b>Purification</b>	Affinity purification

## Immunogen

<b>Gene Name</b>	RAB32
<b>Alternative Names</b>	
<b>Gene ID</b>	10981.0
<b>SwissProt ID</b>	Q13637.Synthesized peptide derived from human protein . at AA range: 160-240

## Application

<b>Dilution Ratio</b>	WB 1:500-2000 ELISA 1:5000-20000
<b>Molecular Weight</b>	24kD

## Background

The protein encoded by this gene anchors the type II regulatory subunit of protein kinase A to the mitochondrion and aids in mitochondrial fission. The encoded protein also appears to be involved in autophagy and melanosome secretion.

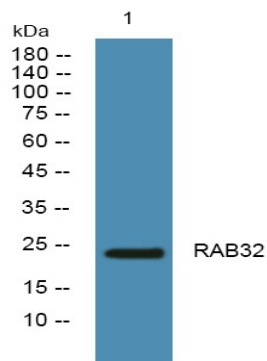
**Product Name: RAB32 Rabbit Polyclonal Antibody**  
**Catalog #: APRab16785**



Variations in this gene may be linked to leprosy. [provided by RefSeq, Dec 2015],function:Acts as an A-kinase anchoring protein by binding to the type II regulatory subunit of protein kinase A and anchoring it to the mitochondrion. Also involved in synchronization of mitochondrial fission.,similarity:Belongs to the small GTPase superfamily. Rab family.,tissue specificity:Widely expressed with high levels in heart, liver, kidney, bone marrow, testis, colon and fetal lung.,

## Research Area

## Image Data



Western blot analysis of lysates from SH-SY5Y cells, primary antibody was diluted at 1:1000, 4°over night

## Note

For research use only.