

## Summary

<b>Production Name</b>	Rab11-FIP3 Rabbit Polyclonal Antibody
<b>Description</b>	Rabbit Polyclonal Antibody
<b>Host</b>	Rabbit
<b>Application</b>	IHC,ELISA
<b>Reactivity</b>	Human,Mouse,Rat

## Performance

<b>Conjugation</b>	Unconjugated
<b>Modification</b>	Unmodified
<b>Isotype</b>	IgG
<b>Clonality</b>	Polyclonal
<b>Form</b>	Liquid
<b>Storage</b>	Store at 4°C short term. Aliquot and store at -20°C long term. Avoid freeze/thaw cycles.
<b>Buffer</b>	Liquid in PBS containing 50% glycerol, 0.5% BSA and 0.02% New type preservative N.
<b>Purification</b>	Affinity purification

## Immunogen

<b>Gene Name</b>	RAB11FIP3
<b>Alternative Names</b>	RAB11FIP3; ARFO1; KIAA0665; Rab11 family-interacting protein 3; FIP3-Rab11; Rab11-FIP3; Arfophilin-1; EF hands-containing Rab-interacting protein; Eferin; MU-MB-17.148
<b>Gene ID</b>	9727.0
<b>SwissProt ID</b>	O75154.The antiserum was produced against synthesized peptide derived from human RAB11FIP3. AA range:569-618

## Application

<b>Dilution Ratio</b>	IHC 1:100-1:300 ELISA: 1:10000
<b>Molecular Weight</b>	

## Background

**Product Name: Rab11-FIP3 Rabbit Polyclonal Antibody**  
**Catalog #: APRab16770**



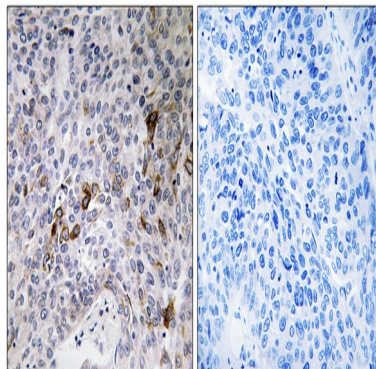
---

Proteins of the large Rab GTPase family (see RAB1A; MIM 179508) have regulatory roles in the formation, targeting, and fusion of intracellular transport vesicles. RAB11FIP3 is one of many proteins that interact with and regulate Rab GTPases (Hales et al., 2001 [PubMed 11495908]).[supplied by OMIM, Mar 2008],similarity:Contains 2 EF-hand domains.,subcellular location:Colocalizes with RAB11A at recycling endosomes.,subunit:Forms an heterooligomeric complex with RAB11FIP4. Binds to RAB11A, RAB11B and RAB25.,

## Research Area

Endocytosis;

## Image Data



Immunohistochemistry analysis of paraffin-embedded human lung carcinoma tissue, using RAB11FIP3 Antibody. The picture on the right is blocked with the synthesized peptide.

## Note

For research use only.