

---

## Summary

<b>Production Name</b>	Rab L2A Rabbit Polyclonal Antibody
<b>Description</b>	Rabbit Polyclonal Antibody
<b>Host</b>	Rabbit
<b>Application</b>	WB,ELISA
<b>Reactivity</b>	Human,Rat,Mouse

## Performance

<b>Conjugation</b>	Unconjugated
<b>Modification</b>	Unmodified
<b>Isotype</b>	IgG
<b>Clonality</b>	Polyclonal
<b>Form</b>	Liquid
<b>Storage</b>	Store at 4°C short term. Aliquot and store at -20°C long term. Avoid freeze/thaw cycles.
<b>Buffer</b>	Liquid in PBS containing 50% glycerol, 0.5% BSA and 0.02% New type preservative N.
<b>Purification</b>	Affinity purification

## Immunogen

<b>Gene Name</b>	RABL2A
<b>Alternative Names</b>	RABL2A; Rab-like protein 2A
<b>Gene ID</b>	11159.0
<b>SwissProt ID</b>	Q9UBK7.The antiserum was produced against synthesized peptide derived from human RABL2A. AA range:179-228

## Application

<b>Dilution Ratio</b>	WB 1:500 - 1:2000. ELISA: 1:20000
<b>Molecular Weight</b>	30-34kD

## Background

---

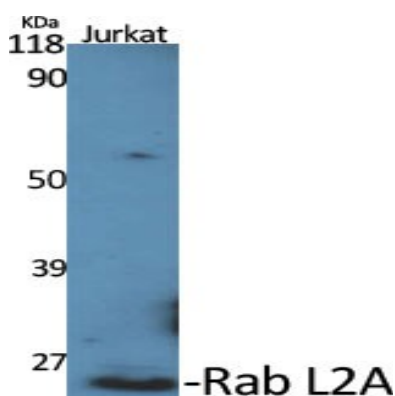
**Product Name: Rab L2A Rabbit Polyclonal Antibody**  
**Catalog #: APRab16764**



This gene is a member of the RAB gene family which belongs to the RAS GTPase superfamily. The proteins in the family of RAS-related signaling molecules are small GTP-binding proteins that play important roles in the regulation of exocytotic and endocytotic pathways. This gene maps to the site of an ancestral telomere fusion event and may be a subtelomeric gene. Alternative splicing results in multiple transcript variants encoding different isoforms. [provided by RefSeq, Apr 2015],similarity:Belongs to the small GTPase superfamily. Rab family.,

## Research Area

## Image Data



Western Blot analysis of various cells using Rab L2A Polyclonal Antibody diluted at 1 : 500



Western Blot analysis of COLO205 cells using Rab L2A Polyclonal Antibody diluted at 1 : 500

## Note

For research use only.