
Summary

Production Name	Rab 7L1 Rabbit Polyclonal Antibody
Description	Rabbit Polyclonal Antibody
Host	Rabbit
Application	WB,ELISA
Reactivity	Human,Mouse,Rat

Performance

Conjugation	Unconjugated
Modification	Unmodified
Isotype	IgG
Clonality	Polyclonal
Form	Liquid
Storage	Store at 4°C short term. Aliquot and store at -20°C long term. Avoid freeze/thaw cycles.
Buffer	Liquid in PBS containing 50% glycerol, 0.5% BSA and 0.02% New type preservative N.
Purification	Affinity purification

Immunogen

Gene Name	RAB7L1
Alternative Names	RAB7L1; Ras-related protein Rab-7L1; Rab-7-like protein 1
Gene ID	8934.0
SwissProt ID	O14966.The antiserum was produced against synthesized peptide derived from human RAB7L1. AA range:115-164

Application

Dilution Ratio	WB 1:500-2000; ELISA 2000-20000
Molecular Weight	28kD

Background

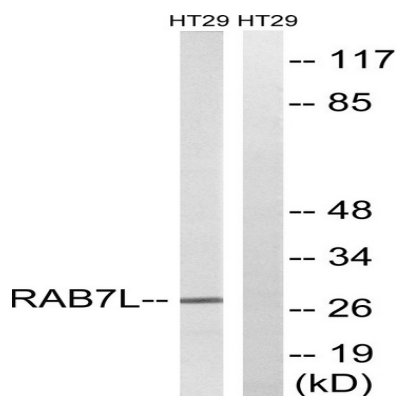
Product Name: Rab 7L1 Rabbit Polyclonal Antibody
Catalog #: APRab16763



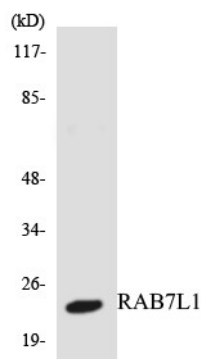
similarity:Belongs to the small GTPase superfamily. Rab family.,tissue specificity:Ubiquitous.,similarity:Belongs to the small GTPase superfamily. Rab family.,tissue specificity:Ubiquitous.,

Research Area

Image Data



Western blot analysis of lysates from HT-29 cells, using RAB7L1 Antibody. The lane on the right is blocked with the synthesized peptide.



Western blot analysis of the lysates from HepG2 cells using RAB7L1 antibody.



Western Blot analysis of various cells using Rab 7L1 Polyclonal Antibody

Product Name: Rab 7L1 Rabbit Polyclonal Antibody
Catalog #: APRab16763



Note

For research use only.