
Summary

Production Name	Rab 5A Rabbit Polyclonal Antibody
Description	Rabbit Polyclonal Antibody
Host	Rabbit
Application	WB,IHC,
Reactivity	Human,Mouse,Rat

Performance

Conjugation	Unconjugated
Modification	Unmodified
Isotype	IgG
Clonality	Polyclonal
Form	Liquid
Storage	Store at 4°C short term. Aliquot and store at -20°C long term. Avoid freeze/thaw cycles.
Buffer	Liquid in PBS containing 50% glycerol, 0.5% BSA and 0.02% New type preservative N.
Purification	Affinity purification

Immunogen

Gene Name	RAB5A
Alternative Names	RAB5A; RAB5; Ras-related protein Rab-5A
Gene ID	5868.0
SwissProt ID	P20339.The antiserum was produced against synthesized peptide derived from the Internal region of human RAB5A. AA range:71-120

Application

Dilution Ratio	WB 1:500 - 1:2000 IHC 1:100 - 1:300. ELISA: 1:20000..
Molecular Weight	24kD

Background

Product Name: Rab 5A Rabbit Polyclonal Antibody
Catalog #: APRab16759

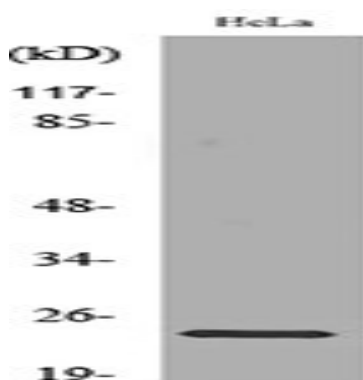


enzyme regulation:Regulated by guanine nucleotide exchange factors (GEFs) which promote the exchange of bound GDP for free GTP.,function:Required for the fusion of plasma membranes and early endosomes.,similarity:Belongs to the small GTPase superfamily. Rab family.,subcellular location:Enriched in stage I melanosomes.,subunit:Binds EEA1. Interacts with RIN1 and GAPVD1, which regulate its pathway, probably by acting as a GEF. Interacts with ALS2CL, UNC84B, ZFYVE20 and RUFY1. Interacts with SGSM1 and SGSM3.,enzyme regulation:Regulated by guanine nucleotide exchange factors (GEFs) which promote the exchange of bound GDP for free GTP.,function:Required for the fusion of plasma membranes and early endosomes.,similarity:Belongs to the small GTPase superfamily. Rab family.,subcellular location:Enriched in stage I melanosomes.,subunit:Binds EEA1. Interacts with RIN1 and GAPVD1, which regulate its pathway, probably by acting as a GEF. Interacts with ALS2CL, UNC84B, ZFYVE20 and RUFY1. Interacts with SGSM1 and SGSM3.,

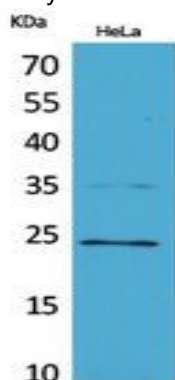
Research Area

Endocytosis;Amyotrophic lateral sclerosis (ALS);

Image Data

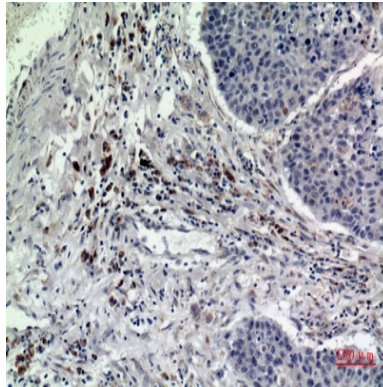


Western blot analysis of lysate from HeLa cells, using RAB5A Antibody.

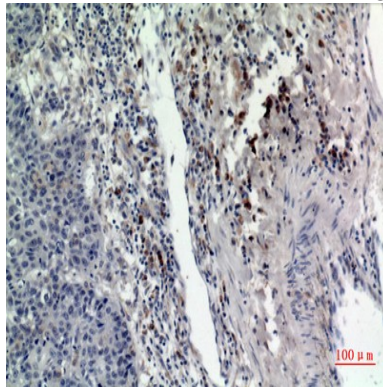


Western Blot analysis of HeLa cells using Rab 5A Polyclonal Antibody.. Secondary antibody was diluted at 1:20000

Product Name: Rab 5A Rabbit Polyclonal Antibody
Catalog #: APRab16759



Immunohistochemical analysis of paraffin-embedded human-lung, antibody was diluted at 1:100



Immunohistochemical analysis of paraffin-embedded human-lung, antibody was diluted at 1:100

Note

For research use only.