

Summary

Production Name	Rab 35 Rabbit Polyclonal Antibody
Description	Rabbit Polyclonal Antibody
Host	Rabbit
Application	WB,ELISA
Reactivity	Human,Mouse,Rat

Performance

Conjugation	Unconjugated
Modification	Unmodified
Isotype	IgG
Clonality	Polyclonal
Form	Liquid
Storage	Store at 4°C short term. Aliquot and store at -20°C long term. Avoid freeze/thaw cycles.
Buffer	Liquid in PBS containing 50% glycerol, 0.5% BSA and 0.02% New type preservative N.
Purification	Affinity purification

Immunogen

Gene Name	RAB35
Alternative Names	RAB35; RAB1C; RAY; Ras-related protein Rab-35; GTP-binding protein RAY; Ras-related protein Rab-1C
Gene ID	11021.0
SwissProt ID	Q15286.The antiserum was produced against synthesized peptide derived from human RAB35. AA range:99-148

Application

Dilution Ratio	WB 1:500-2000; ELISA 2000-20000
Molecular Weight	24kD

Product Name: Rab 35 Rabbit Polyclonal Antibody
Catalog #: APRab16754

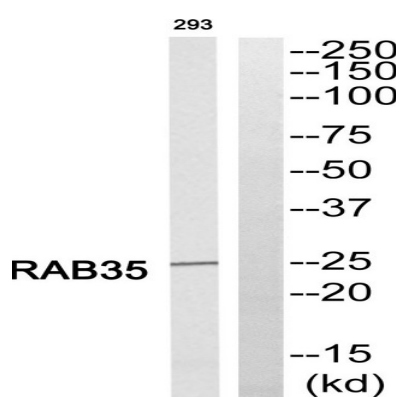


Background

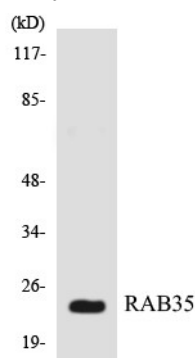
function: Possesses GTPase activity., similarity: Belongs to the small GTPase superfamily. Rab family., subcellular location: Identified by mass spectrometry in melanosome fractions from stage I to stage IV., function: Possesses GTPase activity., similarity: Belongs to the small GTPase superfamily. Rab family., subcellular location: Identified by mass spectrometry in melanosome fractions from stage I to stage IV.,

Research Area

Image Data

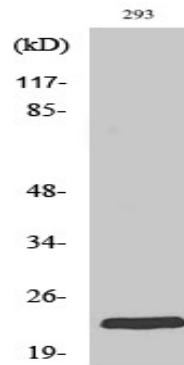


Western blot analysis of RAB35 Antibody. The lane on the right is blocked with the RAB35 peptide.



Western blot analysis of the lysates from HT-29 cells using RAB35 antibody.

Product Name: Rab 35 Rabbit Polyclonal Antibody
Catalog #: APRab16754



Western Blot analysis of various cells using Rab 35 Polyclonal Antibody

Note

For research use only.