

**Product Name: Rab 34 Rabbit Polyclonal Antibody**  
**Catalog #: APRab16753**



## Summary

<b>Production Name</b>	Rab 34 Rabbit Polyclonal Antibody
<b>Description</b>	Rabbit Polyclonal Antibody
<b>Host</b>	Rabbit
<b>Application</b>	IHC,WB,
<b>Reactivity</b>	Human,Rat,Mouse

## Performance

<b>Conjugation</b>	Unconjugated
<b>Modification</b>	Unmodified
<b>Isotype</b>	IgG
<b>Clonality</b>	Polyclonal
<b>Form</b>	Liquid
<b>Storage</b>	Store at 4°C short term. Aliquot and store at -20°C long term. Avoid freeze/thaw cycles.
<b>Buffer</b>	Liquid in PBS containing 50% glycerol, 0.5% BSA and 0.02% New type preservative N.
<b>Purification</b>	Affinity purification

## Immunogen

<b>Gene Name</b>	RAB34
<b>Alternative Names</b>	RAB34; RAB39; RAH; Ras-related protein Rab-34; Ras-related protein Rab-39; Ras-related protein Rah
<b>Gene ID</b>	83871.0
<b>SwissProt ID</b>	Q9BZG1.The antiserum was produced against synthesized peptide derived from human RAB34. AA range:206-255

## Application

<b>Dilution Ratio</b>	WB 1:500 - 1:2000.IHC-p 1:50-200 ELISA: 1:5000..
<b>Molecular Weight</b>	29kD

**Product Name: Rab 34 Rabbit Polyclonal Antibody**  
**Catalog #: APRab16753**

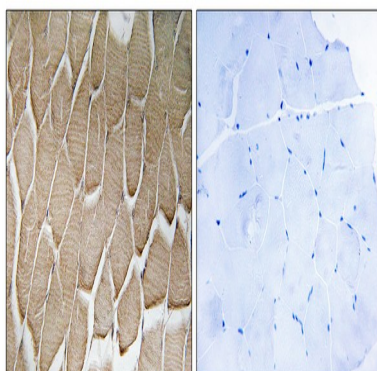


## Background

This gene encodes a protein belonging to the RAB family of proteins, which are small GTPases involved in protein transport. This family member is a Golgi-bound member of the secretory pathway that is involved in the repositioning of lysosomes and the activation of macropinocytosis. Alternative splicing of this gene results in multiple transcript variants. This gene overlaps and shares exon structure with the nine-amino acid residue-repeats (NARR) gene, which encodes a functionally distinct nucleolar protein from a different reading frame. [provided by RefSeq, Jan 2012],function:Protein transport. Involved in the redistribution of lysosomes to the peri-Golgi region.,similarity:Belongs to the small GTPase superfamily. Rab family.,subcellular location:Associates with the Golgi complex.,subunit:Interacts with RILP.,

## Research Area

## Image Data

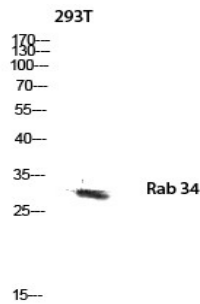


Immunohistochemistry analysis of paraffin-embedded human skeletal muscle, using RAB34 Antibody. The picture on the right is blocked with the synthesized peptide.

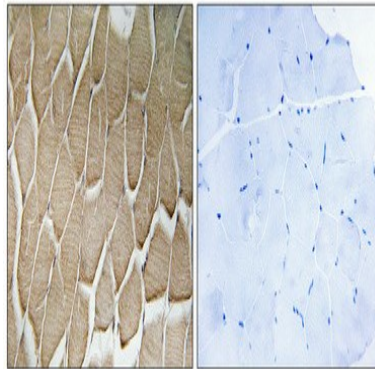


Western Blot analysis of various cells using Rab 34 Polyclonal Antibody diluted at 1: 500

**Product Name: Rab 34 Rabbit Polyclonal Antibody**  
**Catalog #: APRab16753**



Western blot analysis of 293T lysis using Rab 34 antibody. Antibody was diluted at 1:500



Immunohistochemical analysis of paraffin-embedded Human skeletal muscle. Antibody was diluted at 1:100 (4°, overnight) . High-pressure and temperature Tris-EDTA, pH 8.0 was used for antigen retrieval. Negative control (right) obtained from antibody was pre-absorbed by immunogen peptide.

## **Note**

For research use only.