

Product Name: Rab 24 Rabbit Polyclonal Antibody
Catalog #: APRab16745



Summary

Production Name	Rab 24 Rabbit Polyclonal Antibody
Description	Rabbit Polyclonal Antibody
Host	Rabbit
Application	IHC,ELISA
Reactivity	Human,Mouse,Rat

Performance

Conjugation	Unconjugated
Modification	Unmodified
Isotype	IgG
Clonality	Polyclonal
Form	Liquid
Storage	Store at 4°C short term. Aliquot and store at -20°C long term. Avoid freeze/thaw cycles.
Buffer	Liquid in PBS containing 50% glycerol, 0.5% BSA and 0.02% New type preservative N.
Purification	Affinity purification

Immunogen

Gene Name	RAB24
Alternative Names	RAB24; Ras-related protein Rab-24
Gene ID	53917.0
SwissProt ID	Q969Q5.Synthesized peptide derived from Rab 24 . at AA range: 90-170

Application

Dilution Ratio IHC 1:100-1:300 ELISA: 1:10000

Molecular Weight

Background

RAB24 is a small GTPase of the Rab subfamily of Ras-related proteins that regulate intracellular protein trafficking (Oikkonen et al., 1993 [PubMed 8126105]).[supplied by OMIM, Aug 2009],function:May be involved in autophagy-related

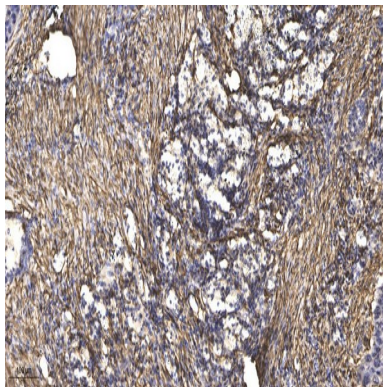
Product Name: Rab 24 Rabbit Polyclonal Antibody
Catalog #: APRab16745



processes.,induction:By extensive retinoic acid treatment, in Ntera-2 teratoma cell line induced to differentiate into post-mitotic neurons (NTN2) (at protein level),miscellaneous:The unusual Ser-67, instead of a conserved Gln in other family members, is the cause of low GTPase activity. As a result, the predominant nucleotide associated with the protein is GTP.,PTM:Isoprenylation is inefficient compared to other Rab family members.,similarity:Belongs to the small GTPase superfamily. Rab family.,subcellular location:Only about 20-25% is recovered in the particulate fraction.,subunit:Unlike other Rab family members, does not interact with GDP dissociation inhibitors (GDIs), including ARHGDI and ARHGDI B.,

Research Area

Image Data



Immunohistochemical analysis of paraffin-embedded human Squamous cell carcinoma of lung. 1, Antibody was diluted at 1:200 (4° overnight) . 2, Tris-EDTA,pH9.0 was used for antigen retrieval. 3,Secondary antibody was diluted at 1:200 (room temperature, 45min) .

Note

For research use only.