

Summary

Production Name	Rab 1B Rabbit Polyclonal Antibody
Description	Rabbit Polyclonal Antibody
Host	Rabbit
Application	WB,IHC,ELISA
Reactivity	Human,Mouse,Rat

Performance

Conjugation	Unconjugated
Modification	Unmodified
Isotype	IgG
Clonality	Polyclonal
Form	Liquid
Storage	Store at 4°C short term. Aliquot and store at -20°C long term. Avoid freeze/thaw cycles.
Buffer	Liquid in PBS containing 50% glycerol, 0.5% BSA and 0.02% New type preservative N.
Purification	Affinity purification

Immunogen

Gene Name	RAB1B
Alternative Names	RAB1B; Ras-related protein Rab-1B
Gene ID	81876.0
SwissProt ID	Q9H0U4.Synthesized peptide derived from Rab 1B . at AA range: 50-130

Application

Dilution Ratio	WB 1:500-2000;IHC-p 1:50-300; ELISA 2000-20000
Molecular Weight	22kD

Background

Members of the RAB protein family, such as RAB1B, are low molecular mass monomeric GTPases localized on the

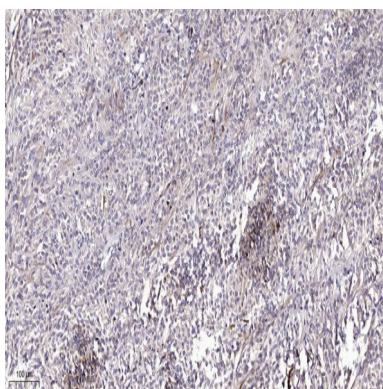
Product Name: Rab 1B Rabbit Polyclonal Antibody
Catalog #: APRab16743



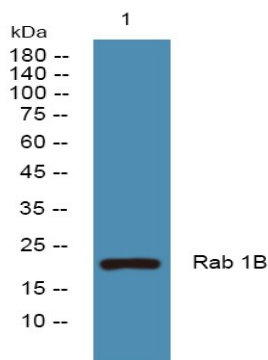
cytoplasmic surfaces of distinct membrane-bound organelles. RAB1B functions in the early secretory pathway and is essential for vesicle transport between the endoplasmic reticulum (ER) and Golgi (Chen et al., 1997 [PubMed 9030196]; Alvarez et al., 2003 [PubMed 12802079]).[supplied by OMIM, Jan 2009],function:Protein transport. Regulates vesicular transport between the endoplasmic reticulum and successive Golgi compartments.,miscellaneous:Rab-1B binds GTP and GDP and possesses intrinsic GTPase activity.,PTM:Prenylated; by GGTase II, only after interaction of the substrate with Rab escort protein 1 (REP1),similarity:Belongs to the small GTPase superfamily. Rab family.,subcellular location:Targeted by REP1 to membranes of specific subcellular compartments including endoplasmic reticulum, Golgi apparatus, and intermediate vesicles between these two compartments. In the GDP-form, colocalizes with GDI in the cytoplasm.,subunit:Interacts with MICAL1, MICAL2 and MICAL3. Interacts with GDI1; the interaction requires the GDP-bound state. Interacts with CHM/REP1; the interaction requires the GDP-bound form and is necessary for prenylation by GGTase II.,

Research Area

Image Data



Immunohistochemical analysis of paraffin-embedded human Colon cancer. 1, Antibody was diluted at 1:200 (4° overnight) .
2, Tris-EDTA,pH9.0 was used for antigen retrieval. 3,Secondary antibody was diluted at 1:200 (room temperature, 45min) .



Western blot analysis of lysates from SH-SY5Y cells, primary antibody was diluted at 1:1000, 4°over night

Product Name: Rab 1B Rabbit Polyclonal Antibody
Catalog #: APRab16743



Note

For research use only.