

**Product Name: Rab 18 Rabbit Polyclonal Antibody**  
**Catalog #: APRab16742**



## Summary

<b>Production Name</b>	Rab 18 Rabbit Polyclonal Antibody
<b>Description</b>	Rabbit Polyclonal Antibody
<b>Host</b>	Rabbit
<b>Application</b>	WB,ELISA
<b>Reactivity</b>	Human,Mouse,Rat

## Performance

<b>Conjugation</b>	Unconjugated
<b>Modification</b>	Unmodified
<b>Isotype</b>	IgG
<b>Clonality</b>	Polyclonal
<b>Form</b>	Liquid
<b>Storage</b>	Store at 4°C short term. Aliquot and store at -20°C long term. Avoid freeze/thaw cycles.
<b>Buffer</b>	Liquid in PBS containing 50% glycerol, 0.5% BSA and 0.02% New type preservative N.
<b>Purification</b>	Affinity purification

## Immunogen

<b>Gene Name</b>	RAB18
<b>Alternative Names</b>	RAB18; Ras-related protein Rab-18
<b>Gene ID</b>	22931.0
<b>SwissProt ID</b>	Q9NP72.The antiserum was produced against synthesized peptide derived from human RAB18. AA range:103-152

## Application

<b>Dilution Ratio</b>	WB 1:500-2000; ELISA 2000-20000
<b>Molecular Weight</b>	28kD

## Background

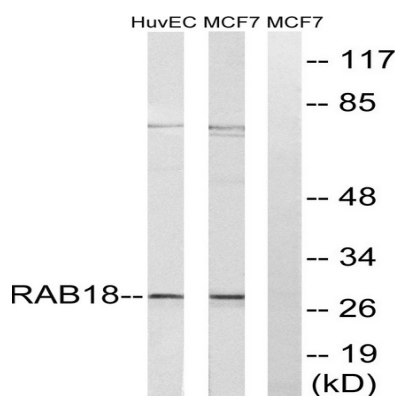
**Product Name: Rab 18 Rabbit Polyclonal Antibody**  
**Catalog #: APRab16742**



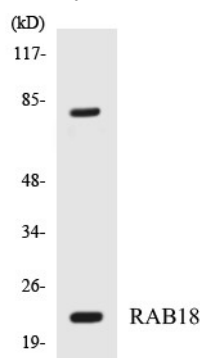
The protein encoded by this gene is a member of a family of Ras-related small GTPases that regulate membrane trafficking in organelles and transport vesicles. Knockdown studies in zebrafish suggest that this protein may have a role in eye and brain development. Mutations in this gene are associated with Warburg micro syndrome type 3. Alternatively spliced transcript variants have been found for this gene. [provided by RefSeq, Jan 2012],function:Plays a role in apical endocytosis/recycling. May be implicated in transport between the plasma membrane and early endosomes.,similarity:Belongs to the small GTPase superfamily. Rab family.,tissue specificity:Ubiquitous.,

## Research Area

## Image Data

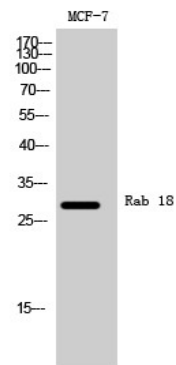


Western blot analysis of lysates from MCF-7 and HUVEC cells, using RAB18 Antibody. The lane on the right is blocked with the synthesized peptide.



Western blot analysis of the lysates from HepG2 cells using RAB18 antibody.

**Product Name: Rab 18 Rabbit Polyclonal Antibody**  
**Catalog #: APRab16742**



Western Blot analysis of MCF-7 cells using Rab 18 Polyclonal Antibody

**Note**

For research use only.