

Product Name: PWWP2B Rabbit Polyclonal Antibody
Catalog #: APRab16705



Summary

Production Name	PWWP2B Rabbit Polyclonal Antibody
Description	Rabbit Polyclonal Antibody
Host	Rabbit
Application	WB,ELISA
Reactivity	Human,Rat,Mouse

Performance

Conjugation	Unconjugated
Modification	Unmodified
Isotype	IgG
Clonality	Polyclonal
Form	Liquid
Storage	Store at 4°C short term. Aliquot and store at -20°C long term. Avoid freeze/thaw cycles.
Buffer	Liquid in PBS containing 50% glycerol, 0.5% BSA and 0.02% New type preservative N.
Purification	Affinity purification

Immunogen

Gene Name	PWWP2B
Alternative Names	PWWP2B; PWWP2; PWWP domain-containing protein 2B
Gene ID	170394.0
SwissProt ID	Q6NUJ5.The antiserum was produced against synthesized peptide derived from human PWWP2B. AA range:268-317

Application

Dilution Ratio	WB 1:500 - 1:2000. ELISA: 1:20000
Molecular Weight	64kD

Background

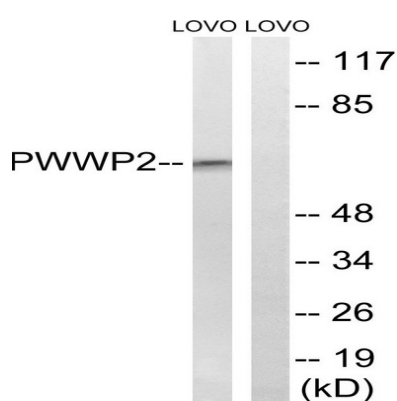
Product Name: PWWP2B Rabbit Polyclonal Antibody
Catalog #: APRab16705



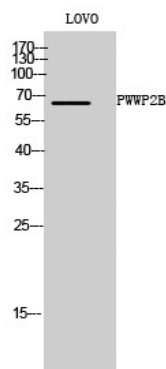
PTM:Phosphorylated upon DNA damage, probably by ATM or ATR.,sequence caution:Translation N-terminally shortened.,similarity:Contains 1 PWWP domain.,PTM:Phosphorylated upon DNA damage, probably by ATM or ATR.,sequence caution:Translation N-terminally shortened.,similarity:Contains 1 PWWP domain.,

Research Area

Image Data



Western blot analysis of lysates from LOVO cells, using PWWP2B Antibody. The lane on the right is blocked with the synthesized peptide.



Western Blot analysis of LOVO cells using PWWP2B Polyclonal Antibody

Note

For research use only.