
Summary

Production Name	PU.1 Rabbit Polyclonal Antibody
Description	Rabbit Polyclonal Antibody
Host	Rabbit
Application	WB,IHC
Reactivity	Human,Mouse,Rat,Monkey

Performance

Conjugation	Unconjugated
Modification	Unmodified
Isotype	IgG
Clonality	Polyclonal
Form	Liquid
Storage	Store at 4°C short term. Aliquot and store at -20°C long term. Avoid freeze/thaw cycles.
Buffer	Liquid in PBS containing 50% glycerol, 0.5% BSA and 0.02% New type preservative N.
Purification	Affinity purification

Immunogen

Gene Name	SPI1
Alternative Names	SPI1; Transcription factor PU.1; 31 kDa-transforming protein
Gene ID	6688.0
SwissProt ID	P17947.The antiserum was produced against synthesized peptide derived from human SPI1. AA range:181-230

Application

Dilution Ratio	WB 1:500 - 1:2000. IHC 1:100 - 1:300. ELISA: 1:40000. Not yet tested in other applications.
Molecular Weight	32kD

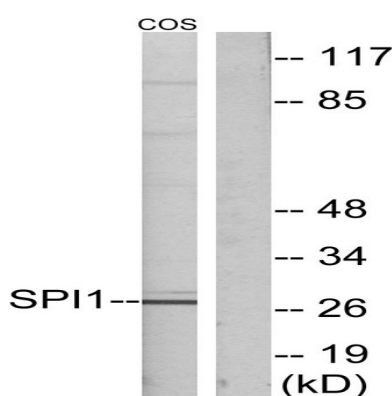
Background

This gene encodes an ETS-domain transcription factor that activates gene expression during myeloid and B-lymphoid cell development. The nuclear protein binds to a purine-rich sequence known as the PU-box found near the promoters of target genes, and regulates their expression in coordination with other transcription factors and cofactors. The protein can also regulate alternative splicing of target genes. Multiple transcript variants encoding different isoforms have been found for this gene. [provided by RefSeq, Jul 2008],function: Binds to the PU-box, a purine-rich DNA sequence (5'-GAGGAA-3') that can act as a lymphoid-specific enhancer. This protein is a transcriptional activator that may be specifically involved in the differentiation or activation of macrophages or B-cells. Also binds RNA and may modulate pre-mRNA splicing.,induction: Highly expressed in both FV-P and FV-A-induced erythro-leukemia cell lines that have undergone rearrangements of the Spi-1 gene due to the insertion of SFFV.,similarity: Belongs to the ETS family.,similarity: Contains 1 ETS DNA-binding domain.,subunit: Binds DNA as a monomer. Interacts with RUNX1 and SPIB. Interacts with CEBPD and NONO.,

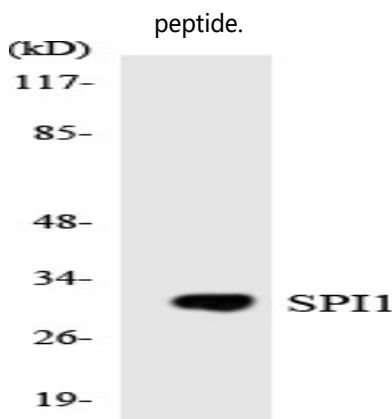
Research Area

Pathways in cancer; Acute myeloid leukemia;

Image Data

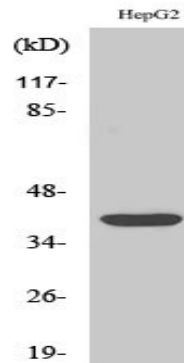


Western blot analysis of lysates from COS7 cells, using SPI1 Antibody. The lane on the right is blocked with the synthesized

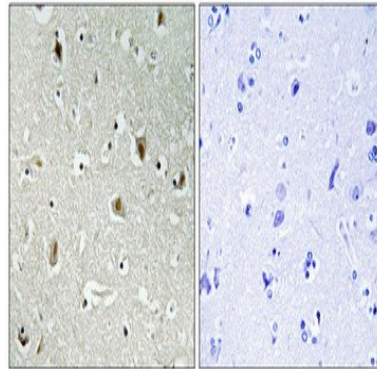


Western blot analysis of the lysates from HUVEC cells using SPI1 antibody.

Product Name: PU.1 Rabbit Polyclonal Antibody
Catalog #: APRab16688



Western Blot analysis of various cells using PU.1 Polyclonal Antibody cells nucleus extracted by Minute TM Cytoplasmic and Nuclear Fractionation kit (SC-003, Inventbiotech, MN, USA) .



Immunohistochemical analysis of paraffin-embedded Human brain. Antibody was diluted at 1:100 (4°, overnight) . High-pressure and temperature Tris-EDTA, pH 8.0 was used for antigen retrieval. Negative control (right) obtained from antibody was pre-absorbed by immunogen peptide.

Note

For research use only.