
Summary

Production Name	Ptx3 Rabbit Polyclonal Antibody
Description	Rabbit Polyclonal Antibody
Host	Rabbit
Application	WB,IHC,IF,ELISA
Reactivity	Human,Mouse

Performance

Conjugation	Unconjugated
Modification	Unmodified
Isotype	IgG
Clonality	Polyclonal
Form	Liquid
Storage	Store at 4°C short term. Aliquot and store at -20°C long term. Avoid freeze/thaw cycles.
Buffer	Liquid in PBS containing 50% glycerol, 0.5% BSA and 0.02% New type preservative N.
Purification	Affinity purification

Immunogen

Gene Name	PTX3 PTX3; TNFAIP5; TSG14; Pentraxin-related protein PTX3; Pentaxin-related protein PTX3;
Alternative Names	Tumor necrosis factor alpha-induced protein 5; TNF alpha-induced protein 5; Tumor necrosis factor-inducible gene 14 protein; TSG-14
Gene ID	5806.0
SwissProt ID	P26022.The antiserum was produced against synthesized peptide derived from human PTX3. AA range:1-50

Application

Dilution Ratio	WB 1:500 - 1:2000. IHC 1:100 - 1:300. IF 1:200 - 1:1000. ELISA: 1:10000. Not yet tested in other applications.
-----------------------	--

Product Name: Ptx3 Rabbit Polyclonal Antibody
Catalog #: APRab16687



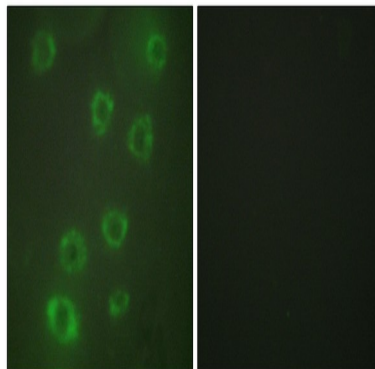
Molecular Weight 40kD

Background

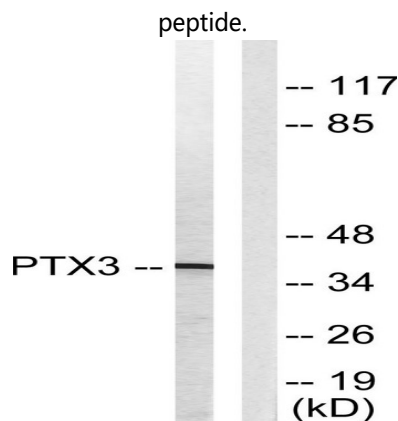
This gene encodes a member of the pentraxin protein family. The expression of this protein is induced by inflammatory cytokines in response to inflammatory stimuli in several mesenchymal and epithelial cell types, particularly endothelial cells and mononuclear phagocytes. The protein promotes fibrocyte differentiation and is involved in regulating inflammation and complement activation. It also plays a role in angiogenesis and tissue remodeling. The protein serves as a biomarker for several inflammatory conditions. [provided by RefSeq, Jun 2016],function:Plays a role in the regulation of innate resistance to pathogens, inflammatory reactions, possibly clearance of self-components and female fertility.,induction:By interleukin-1 beta and TNF-alpha.,PTM:Glycosylated.,similarity:Contains 1 pentraxin domain.,subunit:Homooctamer; disulfide-linked. Binds to C1q,.

Research Area

Image Data

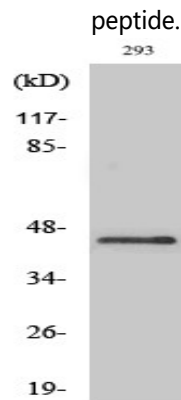


Immunofluorescence analysis of HUVEC cells, using PTX3 Antibody. The picture on the right is blocked with the synthesized peptide.

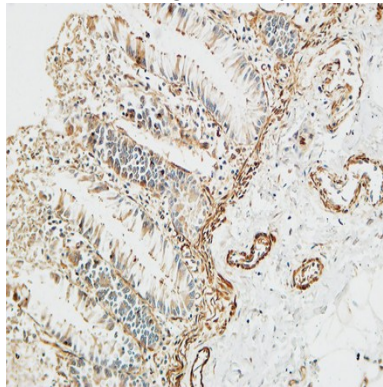


Western blot analysis of lysates from 293 cells, using PTX3 Antibody. The lane on the right is blocked with the synthesized peptide.

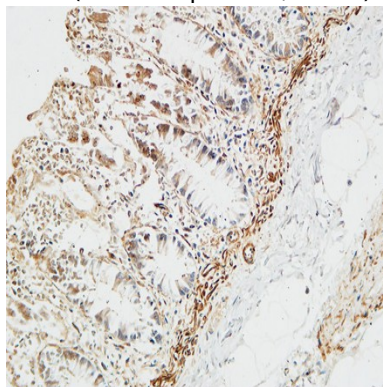
Product Name: Ptx3 Rabbit Polyclonal Antibody
Catalog #: APRab16687



Western Blot analysis of various cells using Ptx3 Polyclonal Antibody diluted at 1: 1000

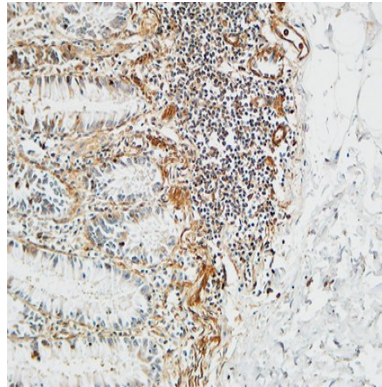


Immunohistochemical analysis of paraffin-embedded Human colon. 1, Antibody was diluted at 1:100 (4°,overnight) . 2, High-pressure and temperature EDTA, pH8.0 was used for antigen retrieval. 3,Secondary antibody was diluted at 1:200 (room temperature, 30min) .



Immunohistochemical analysis of paraffin-embedded Human colon. 1, Antibody was diluted at 1:100 (4°,overnight) . 2, High-pressure and temperature EDTA, pH8.0 was used for antigen retrieval. 3,Secondary antibody was diluted at 1:200 (room temperature, 30min) .

Product Name: Ptx3 Rabbit Polyclonal Antibody
Catalog #: APRab16687



Immunohistochemical analysis of paraffin-embedded Human colon. 1, Antibody was diluted at 1:100 (4°,overnight) . 2, High-pressure and temperature EDTA, pH8.0 was used for antigen retrieval. 3,Secondary antibody was diluted at 1:200 (room temperature, 30min) .

Note

For research use only.