

## Summary

<b>Production Name</b>	PTPZ Rabbit Polyclonal Antibody
<b>Description</b>	Rabbit Polyclonal Antibody
<b>Host</b>	Rabbit
<b>Application</b>	WB,
<b>Reactivity</b>	Human,Mouse,Rat

## Performance

<b>Conjugation</b>	Unconjugated
<b>Modification</b>	Unmodified
<b>Isotype</b>	IgG
<b>Clonality</b>	Polyclonal
<b>Form</b>	Liquid
<b>Storage</b>	Store at 4°C short term. Aliquot and store at -20°C long term. Avoid freeze/thaw cycles.
<b>Buffer</b>	Liquid in PBS containing 50% glycerol, 0.5% BSA and 0.02% New type preservative N.
<b>Purification</b>	Affinity purification

## Immunogen

<b>Gene Name</b>	PTPRZ1
<b>Alternative Names</b>	PTPRZ1; HTPZP2; PTPRZ; PTPRZ2; PTPZ; Receptor-type tyrosine-protein phosphatase zeta; R-PTP-zeta; Protein-tyrosine phosphatase receptor type Z polypeptide 1; Protein-tyrosine phosphatase receptor type Z polypeptide 2; R-PTP-zeta-2
<b>Gene ID</b>	5803.0
<b>SwissProt ID</b>	P23471.The antiserum was produced against synthesized peptide derived from human PTPRZ1. AA range:122-171

## Application

<b>Dilution Ratio</b>	WB 1:500-2000;; ELISA 2000-20000
<b>Molecular Weight</b>	250kD

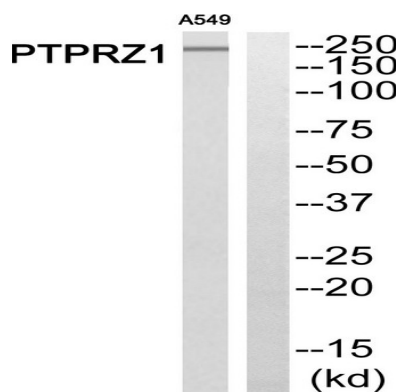
## Background

This gene encodes a member of the receptor protein tyrosine phosphatase family. Expression of this gene is restricted to the central nervous system (CNS), and it may be involved in the regulation of specific developmental processes in the CNS. Alternatively spliced transcript variants encoding different isoforms have been described for this gene. [provided by RefSeq, May 2011], catalytic activity: Protein tyrosine phosphate + H<sub>2</sub>O = protein tyrosine + phosphate., caution: PubMed:8387522 and PubMed:2170109 have termed this protein RPTPase beta., function: May be involved in the regulation of specific developmental processes in the CNS., sequence caution: Contaminating sequence. The N-terminus may be contaminated with vector sequence., similarity: Belongs to the protein-tyrosine phosphatase family. Receptor class 5 subfamily., similarity: Contains 1 alpha-carbonic anhydrase domain., similarity: Contains 1 fibronectin type-III domain., similarity: Contains 2 tyrosine-protein phosphatase domains., subunit: The carbonic-anhydrase like domain binds to contactin., tissue specificity: Specifically expressed in the central nervous system, where it is localized in the Purkinje cell layer of the cerebellum, the dentate gyrus, and the subependymal layer of the anterior horn of the lateral ventricle. Developmentally regulated in the brain.,

## Research Area

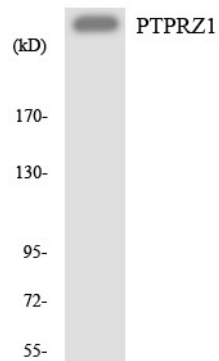
Epithelial cell signaling in Helicobacter pylori infection;

## Image Data

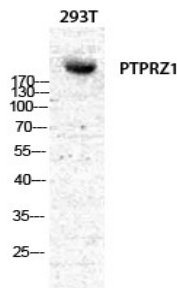


Western blot analysis of PTPRZ1 Antibody. The lane on the right is blocked with the PTPRZ1 peptide.

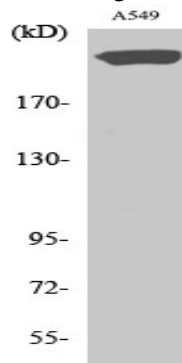
**Product Name: PTP $\zeta$  Rabbit Polyclonal Antibody**  
**Catalog #: APRab16684**



Western blot analysis of the lysates from HeLa cells using PTPRZ1 antibody.



Western Blot analysis of various cells using PTP $\zeta$  Polyclonal Antibody diluted at 1 : 500



Western Blot analysis of A549 cells using PTP $\zeta$  Polyclonal Antibody diluted at 1 : 500

## Note

For research use only.