

Summary

Production Name	PTP22 Rabbit Polyclonal Antibody
Description	Rabbit Polyclonal Antibody
Host	Rabbit
Application	WB,ELISA
Reactivity	Human,Mouse,Rat

Performance

Conjugation	Unconjugated
Modification	Unmodified
Isotype	IgG
Clonality	Polyclonal
Form	Liquid
Storage	Store at 4°C short term. Aliquot and store at -20°C long term. Avoid freeze/thaw cycles.
Buffer	Liquid in PBS containing 50% glycerol, 0.5% BSA and 0.02% New type preservative N.
Purification	Affinity purification

Immunogen

Gene Name	PTPN22
Alternative Names	PTPN22; PTPN8; Tyrosine-protein phosphatase non-receptor type 22; Hematopoietic cell protein-tyrosine phosphatase 70Z-PEP; Lymphoid phosphatase; LyP; PEST-domain phosphatase; PEP
Gene ID	26191.0
SwissProt ID	Q9Y2R2.Synthesized peptide derived from the N-terminal region of human PTP22.

Application

Dilution Ratio	IHC 1:50-300
Molecular Weight	91kD

Background

Product Name: PTP22 Rabbit Polyclonal Antibody
Catalog #: APRab16667

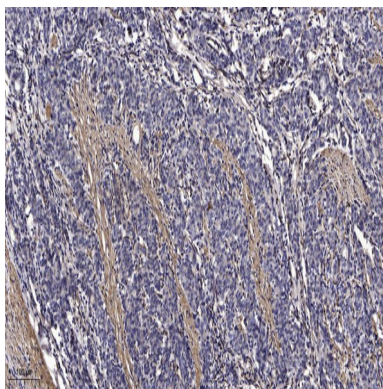


This gene encodes of member of the non-receptor class 4 subfamily of the protein-tyrosine phosphatase family. The encoded protein is a lymphoid-specific intracellular phosphatase that associates with the molecular adapter protein CBL and may be involved in regulating CBL function in the T-cell receptor signaling pathway. Mutations in this gene may be associated with a range of autoimmune disorders including Type 1 Diabetes, rheumatoid arthritis, systemic lupus erythematosus and Graves' disease. Alternatively spliced transcript variants encoding distinct isoforms have been described. [provided by RefSeq, Mar 2009],catalytic activity:Protein tyrosine phosphate + H(2)O = protein tyrosine + phosphate.,function:Seems to act on Cbl. May play a role in regulating the function of Cbl and its associated protein kinases.,similarity:Belongs to the protein-tyrosine phosphatase family. Non-receptor class 4 subfamily.,similarity:Contains 1 tyrosine-protein phosphatase domain.,tissue specificity:Predominantly expressed in lymphoid tissues and cells. Isoform 1 is expressed in thymocytes and both mature B and T-cells.,

Research Area

MAPK

Image Data



Immunohistochemical analysis of paraffin-embedded human Gastric adenocarcinoma. 1, Antibody was diluted at 1:200 (4° overnight) . 2, Tris-EDTA,pH9.0 was used for antigen retrieval. 3,Secondary antibody was diluted at 1:200 (room temperature, 45min) .

Note

For research use only.