

Product Name: PSMC6 Rabbit Polyclonal Antibody
Catalog #: APRab16614



Summary

Production Name	PSMC6 Rabbit Polyclonal Antibody
Description	Rabbit Polyclonal Antibody
Host	Rabbit
Application	WB,
Reactivity	Human,Mouse

Performance

Conjugation	Unconjugated
Modification	Unmodified
Isotype	IgG
Clonality	Polyclonal
Form	Liquid
Storage	Store at 4°C short term. Aliquot and store at -20°C long term. Avoid freeze/thaw cycles.
Buffer	Liquid in PBS containing 50% glycerol, 0.5% BSA and 0.02% New type preservative N.
Purification	Affinity purification

Immunogen

Gene Name	PSMC6
Alternative Names	PSMC6; SUG2; 26S protease regulatory subunit 10B; 26S proteasome AAA-ATPase subunit RPT4; Proteasome 26S subunit ATPase 6; Proteasome subunit p42
Gene ID	5706.0
SwissProt ID	P62333.The antiserum was produced against synthesized peptide derived from human PSMC6. AA range:61-110

Application

Dilution Ratio	WB 1:500-2000
Molecular Weight	44kD

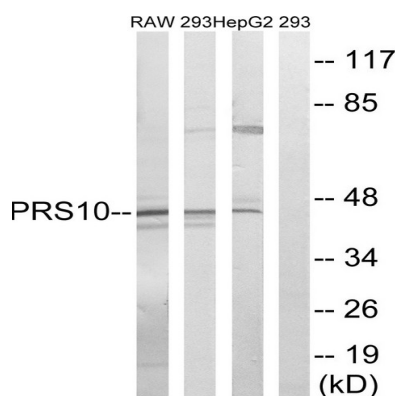
Background

proteasome 26S subunit, ATPase 6(PSMC6) Homo sapiens The 26S proteasome is a multicatalytic proteinase complex with a highly ordered structure composed of 2 complexes, a 20S core and a 19S regulator. The 20S core is composed of 4 rings of 28 non-identical subunits; 2 rings are composed of 7 alpha subunits and 2 rings are composed of 7 beta subunits. The 19S regulator is composed of a base, which contains 6 ATPase subunits and 2 non-ATPase subunits, and a lid, which contains up to 10 non-ATPase subunits. Proteasomes are distributed throughout eukaryotic cells at a high concentration and cleave peptides in an ATP/ubiquitin-dependent process in a non-lysosomal pathway. An essential function of a modified proteasome, the immunoproteasome, is the processing of class I MHC peptides. This gene encodes one of the ATPase subunits, a member of the triple-A family of ATPases which have a chaperone-like activity. Pseudogenes have been identified on chromfunction:The 26S protease is involved in the ATP-dependent degradation of ubiquitinated proteins. The regulatory (or ATPase) complex confers ATP dependency and substrate specificity to the 26S complex.,similarity:Belongs to the AAA ATPase family.,subunit:Found in the multi-protein complexes: the 26S proteasome (formed from the 20S proteasome and PA700), and the modulator. PA700 consists of 28 subunits arranged to form a cylinder-shaped complex by four stacked rings, each containing seven subunits. Interacts with PAAF1.,

Research Area

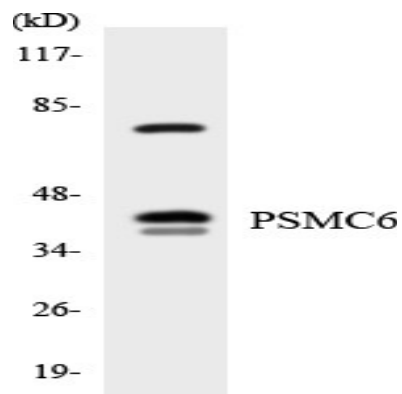
Proteasome;

Image Data

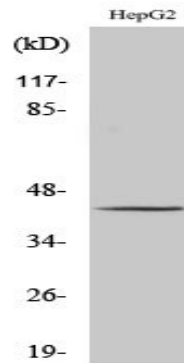


Western blot analysis of lysates from HepG2, 293, and RAW264.7 cells, using PSMC6 Antibody. The lane on the right is blocked with the synthesized peptide.

Product Name: PSMC6 Rabbit Polyclonal Antibody
Catalog #: APRab16614



Western blot analysis of the lysates from HeLa cells using PSMC6 antibody.



Western Blot analysis of various cells using PSMC6 Polyclonal Antibody

Note

For research use only.