

Summary

Production Name	PSMC3 Rabbit Polyclonal Antibody
Description	Rabbit Polyclonal Antibody
Host	Rabbit
Application	WB,ELISA
Reactivity	Human,Mouse,Rat

Performance

Conjugation	Unconjugated
Modification	Unmodified
Isotype	IgG
Clonality	Polyclonal
Form	Liquid
Storage	Store at 4°C short term. Aliquot and store at -20°C long term. Avoid freeze/thaw cycles.
Buffer	Liquid in PBS containing 50% glycerol, 0.5% BSA and 0.02% New type preservative N.
Purification	Affinity purification

Immunogen

Gene Name	PSMC3 PSMC3; TBP1; 26S protease regulatory subunit 6A; 26S proteasome AAA-ATPase subunit RPT5; Proteasome 26S subunit ATPase 3; Proteasome subunit P50; Tat-binding protein 1; TBP-1
Alternative Names	
Gene ID	5702.0
SwissProt ID	P17980.The antiserum was produced against synthesized peptide derived from human PRS6A. AA range:271-320

Application

Dilution Ratio	WB 1:500 - 1:2000. ELISA: 1:40000
Molecular Weight	45kD

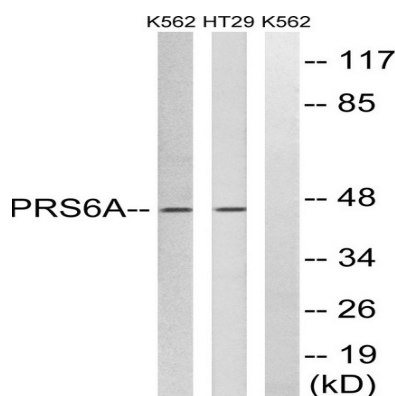
Background

proteasome 26S subunit, ATPase 3(PSMC3) Homo sapiens The 26S proteasome is a multicatalytic proteinase complex with a highly ordered structure composed of 2 complexes, a 20S core and a 19S regulator. The 20S core is composed of 4 rings of 28 non-identical subunits; 2 rings are composed of 7 alpha subunits and 2 rings are composed of 7 beta subunits. The 19S regulator is composed of a base, which contains 6 ATPase subunits and 2 non-ATPase subunits, and a lid, which contains up to 10 non-ATPase subunits. Proteasomes are distributed throughout eukaryotic cells at a high concentration and cleave peptides in an ATP/ubiquitin-dependent process in a non-lysosomal pathway. An essential function of a modified proteasome, the immunoproteasome, is the processing of class I MHC peptides. This gene encodes one of the ATPase subunits, a member of the triple-A family of ATPases that have chaperone-like activity. This subunit may compete with PSMC2 for bindifunction:The 26S protease is involved in the ATP-dependent degradation of ubiquitinated proteins. The regulatory (or ATPase) complex confers ATP dependency and substrate specificity to the 26S complex (By similarity). In case of HIV-1 infection, suppresses Tat-mediated transactivation.,PTM:Sumoylated by UBE2I in response to MEKK1-mediated stimuli.,similarity:Belongs to the AAA ATPase family.,subunit:May form a heterodimer with a related family member. Interacts with PAAF1. Interacts with HIV-1 Tat.,

Research Area

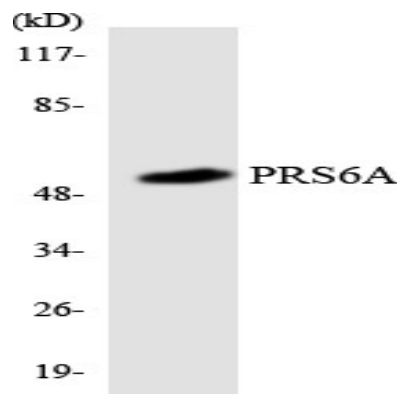
Proteasome;

Image Data



Western blot analysis of lysates from K562 and HT-29 cells, using PRS6A Antibody. The lane on the right is blocked with the synthesized peptide.

Product Name: PSMC3 Rabbit Polyclonal Antibody
Catalog #: APRab16612



Western blot analysis of the lysates from HT-29 cells using PRS6A antibody.

Note

For research use only.