

Product Name: PSD-93 Rabbit Polyclonal Antibody
Catalog #: APRab16591



Summary

Production Name	PSD-93 Rabbit Polyclonal Antibody
Description	Rabbit Polyclonal Antibody
Host	Rabbit
Application	WB,IHC,
Reactivity	Human,Rat,Mouse

Performance

Conjugation	Unconjugated
Modification	Unmodified
Isotype	IgG
Clonality	Polyclonal
Form	Liquid
Storage	Store at 4°C short term. Aliquot and store at -20°C long term. Avoid freeze/thaw cycles.
Buffer	Liquid in PBS containing 50% glycerol, 0.5% BSA and 0.02% New type preservative N.
Purification	Affinity purification

Immunogen

Gene Name	DLG2
Alternative Names	DLG2; Disks large homolog 2; Channel-associated protein of synapse-110; Chapsyn-110; Postsynaptic density protein PSD-93
Gene ID	1740.0
SwissProt ID	Q15700.The antiserum was produced against synthesized peptide derived from human DLG2. AA range:601-650

Application

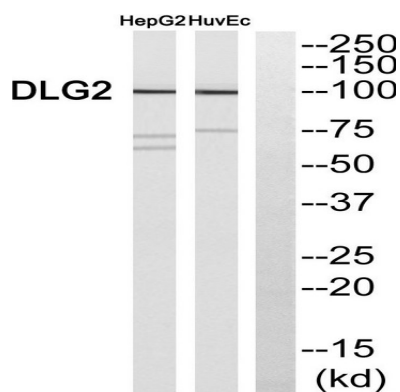
Dilution Ratio	WB 1:500 - 1:2000. IHC 1:100 - 1:300. ELISA: 1:40000..
Molecular Weight	97kD

Background

This gene encodes a member of the membrane-associated guanylate kinase (MAGUK) family. The encoded protein forms a heterodimer with a related family member that may interact at postsynaptic sites to form a multimeric scaffold for the clustering of receptors, ion channels, and associated signaling proteins. Multiple transcript variants encoding different isoforms have been found for this gene. Additional transcript variants have been described, but their full-length nature is not known. [provided by RefSeq, Dec 2008],domain:Isoform 2 has an L27 domain close to N-terminus.,function:Required for perception of chronic pain through NMDA receptor signaling. Regulates surface expression of NMDA receptors in dorsal horn neurons of the spinal cord. Interacts with the cytoplasmic tail of NMDA receptor subunits as well as inward rectifying potassium channels. Involved in regulation of synaptic stability at cholinergic synapses. Part of the postsynaptic protein scaffold of excitatory synapses.,PTM:Palmitoylation of isoform 1 is not required for targeting to postsynaptic density.,similarity:Belongs to the MAGUK family.,similarity:Contains 1 guanylate kinase-like domain.,similarity:Contains 1 SH3 domain.,similarity:Contains 3 PDZ (DHR) domains.,subcellular location:Concentrated in soma and postsynaptic density of a subset of neurons.,subunit:Interacts with NOS1/nNOS through second PDZ domain (By similarity). Interacts with C-terminus of KCNJ2/Kir2.1 through one of its PDZ domains.,

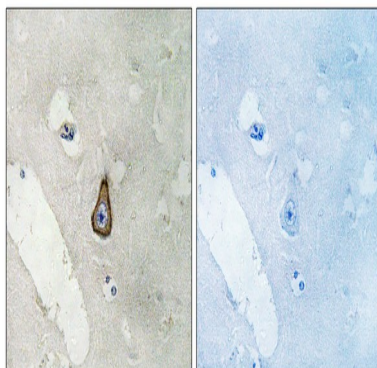
Research Area

Image Data

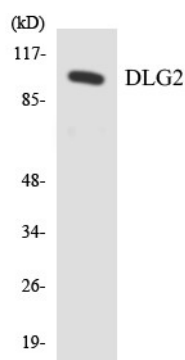


Western blot analysis of DLG2 Antibody. The lane on the right is blocked with the DLG2 peptide.

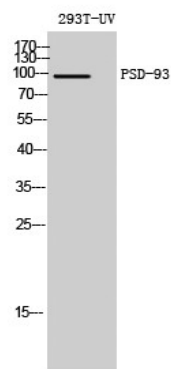
Product Name: PSD-93 Rabbit Polyclonal Antibody
Catalog #: APRab16591



Immunohistochemistry analysis of paraffin-embedded human brain, using DLG2 Antibody. The lane on the right is blocked with the DLG2 peptide.



Western blot analysis of the lysates from HeLa cells using DLG2 antibody.



Western Blot analysis of 293T-UV cells using PSD-93 Polyclonal Antibody diluted at 1: 1000

Note

For research use only.