

Product Name: PSCA Rabbit Polyclonal Antibody
Catalog #: APRab16585



Summary

Production Name	PSCA Rabbit Polyclonal Antibody
Description	Rabbit Polyclonal Antibody
Host	Rabbit
Application	WB,
Reactivity	Human,Mouse

Performance

Conjugation	Unconjugated
Modification	Unmodified
Isotype	IgG
Clonality	Polyclonal
Form	Liquid
Storage	Store at 4°C short term. Aliquot and store at -20°C long term. Avoid freeze/thaw cycles.
Buffer	Liquid in PBS containing 50% glycerol, 0.5% BSA and 0.02% New type preservative N.
Purification	Affinity purification

Immunogen

Gene Name	PSCA
Alternative Names	PSCA; Prostate stem cell antigen
Gene ID	8000.0
SwissProt ID	O43653.The antiserum was produced against synthesized peptide derived from human Prostate Stem Cell Antigen. AA range:41-90

Application

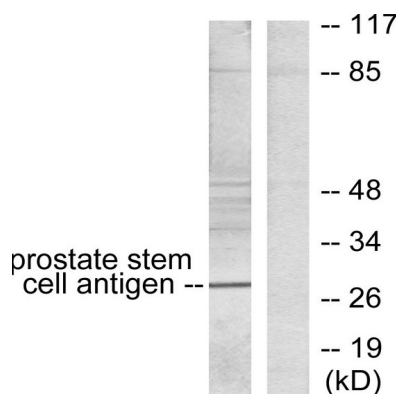
Dilution Ratio	WB 1:500-2000;; ELISA 2000-20000
Molecular Weight	29kD

Background

This gene encodes a glycosylphosphatidylinositol-anchored cell membrane glycoprotein. In addition to being highly expressed in the prostate it is also expressed in the bladder, placenta, colon, kidney, and stomach. This gene is up-regulated in a large proportion of prostate cancers and is also detected in cancers of the bladder and pancreas. This gene includes a polymorphism that results in an upstream start codon in some individuals; this polymorphism is thought to be associated with a risk for certain gastric and bladder cancers. Alternative splicing results in multiple transcript variants. [provided by RefSeq, Feb 2010],function:May be involved in the regulation of cell proliferation. Has a cell-proliferation inhibition activity in vitro.,induction:Down-regulated in gastric cancer cells.,polymorphism:Genetic variations in PSCA may influence susceptibility to diffuse-type gastric cancer.,similarity:Contains 1 UPAR/Ly6 domain.,tissue specificity:Highly expressed in prostate (basal, secretory and neuroendocrine epithelium cells). Also found in bladder (transitional epithelium), placenta (trophoblasts), stomach (neuroendocrine cells), colon (neuroendocrine cells) and kidney (collecting ducts). Overexpressed in prostate cancers and expression is correlated with tumor stage, grade and androgen-independence. Highly expressed in prostate cancer bone metastases. Expressed in gastric epithelial cells, mainly in the isthmus (at protein level). Not detected in normal intestinal epithelium (at protein level),.

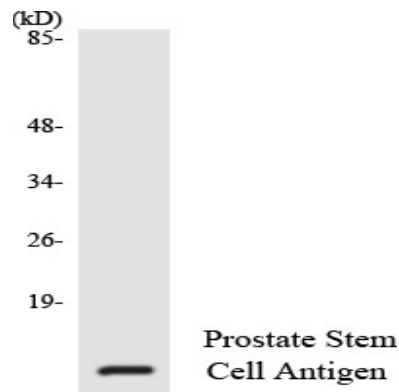
Research Area

Image Data

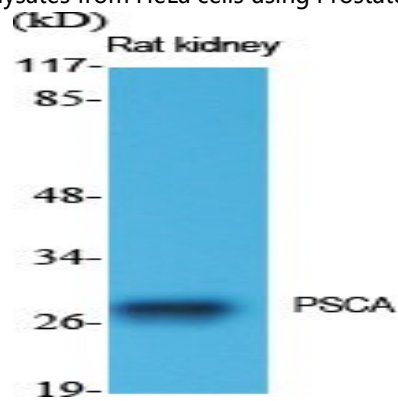


Western blot analysis of lysates from HepG2 cells, using Prostate Stem Cell Antigen Antibody. The lane on the right is blocked with the synthesized peptide.

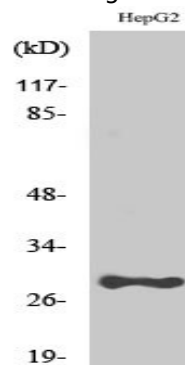
Product Name: PSCA Rabbit Polyclonal Antibody
Catalog #: APRab16585



Western blot analysis of the lysates from HeLa cells using Prostate Stem Cell Antigen antibody.



Western Blot analysis of various cells using PSCA Polyclonal Antibody diluted at 1: 1000



Western Blot analysis of HepG2 cells using PSCA Polyclonal Antibody diluted at 1: 1000

Note

For research use only.