
Summary

Production Name	PSA Rabbit Polyclonal Antibody
Description	Rabbit Polyclonal Antibody
Host	Rabbit
Application	WB,IHC,ELISA
Reactivity	Human,Rat,Mouse

Performance

Conjugation	Unconjugated
Modification	Unmodified
Isotype	IgG
Clonality	Polyclonal
Form	Liquid
Storage	Store at 4°C short term. Aliquot and store at -20°C long term. Avoid freeze/thaw cycles.
Buffer	Liquid in PBS containing 50% glycerol, 0.5% BSA and 0.02% New type preservative N.
Purification	Affinity purification

Immunogen

Gene Name	KLK3
Alternative Names	KLK3; APS; Prostate-specific antigen; PSA; Gamma-seminoprotein; Semin; Kallikrein-3; P-30 antigen; Semenogelase
Gene ID	354.0
SwissProt ID	P07288.The antiserum was produced against synthesized peptide derived from human Prostate-specific Antigen. AA range:81-130

Application

Dilution Ratio	WB 1:500 - 1:2000. IHC 1:100 - 1:300. ELISA: 1:20000. Not yet tested in other applications.
Molecular Weight	34kD

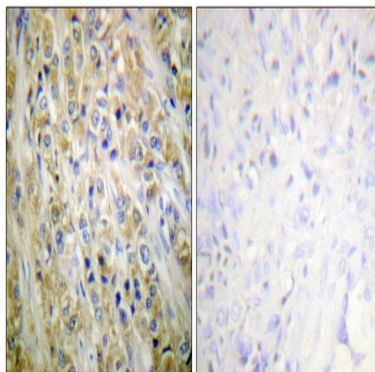
Background

Kallikreins are a subgroup of serine proteases having diverse physiological functions. Growing evidence suggests that many kallikreins are implicated in carcinogenesis and some have potential as novel cancer and other disease biomarkers. This gene is one of the fifteen kallikrein subfamily members located in a cluster on chromosome 19. Its protein product is a protease present in seminal plasma. It is thought to function normally in the liquefaction of seminal coagulum, presumably by hydrolysis of the high molecular mass seminal vesicle protein. Serum level of this protein, called PSA in the clinical setting, is useful in the diagnosis and monitoring of prostatic carcinoma. Alternate splicing of this gene generates several transcript variants encoding different isoforms. [provided by RefSeq, Jul 2008], catalytic activity: Preferential cleavage: -Tyr-|-Xaa-, function: Hydrolyzes semenogelin-1 thus leading to the liquefaction of the seminal coagulum., online information: Prostate-specific antigen entry, similarity: Belongs to the peptidase S1 family., similarity: Belongs to the peptidase S1 family. Kallikrein subfamily., similarity: Contains 1 peptidase S1 domain.,

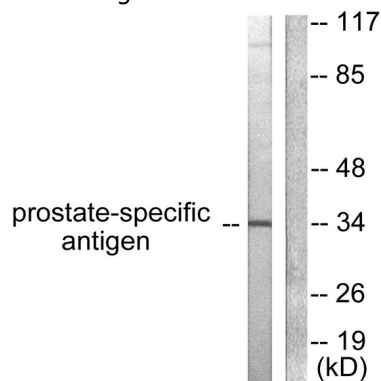
Research Area

Pathways in cancer; Prostate cancer;

Image Data



Immunohistochemistry analysis of paraffin-embedded human prostate carcinoma tissue, using Prostate-specific Antigen Antibody. The picture on the right is blocked with the synthesized peptide.



Product Name: PSA Rabbit Polyclonal Antibody
Catalog #: APRab16575



Western blot analysis of lysates from mouse heart cells, using Prostate-specific Antigen Antibody. The lane on the right is blocked with the synthesized peptide.

Note

For research use only.