

Product Name: PRPH Rabbit Polyclonal Antibody
Catalog #: APRab16553



Summary

Production Name	PRPH Rabbit Polyclonal Antibody
Description	Rabbit Polyclonal Antibody
Host	Rabbit
Application	IHC, WB,
Reactivity	Human, Rat

Performance

Conjugation	Unconjugated
Modification	Unmodified
Isotype	IgG
Clonality	Polyclonal
Form	Liquid
Storage	Store at 4°C short term. Aliquot and store at -20°C long term. Avoid freeze/thaw cycles.
Buffer	Liquid in PBS containing 50% glycerol, 0.5% BSA and 0.02% New type preservative N.
Purification	Affinity purification

Immunogen

Gene Name	PRPH
Alternative Names	PRPH; NEF4; PRPH1; Peripherin; Neurofilament 4
Gene ID	5630.0
SwissProt ID	P41219. The antiserum was produced against synthesized peptide derived from human Peripherin. AA range:421-470

Application

Dilution Ratio	WB 1:500 - 1:2000. IHC 1:100 - 1:300. ELISA: 1:20000..
Molecular Weight	55kD

Background

Product Name: PRPH Rabbit Polyclonal Antibody
Catalog #: APRab16553

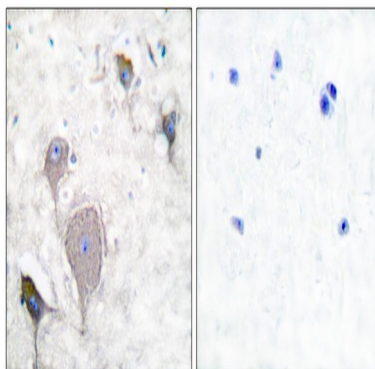


This gene encodes a cytoskeletal protein found in neurons of the peripheral nervous system. The encoded protein is a type III intermediate filament protein with homology to other cytoskeletal proteins such as desmin, and is a different protein than the peripherin found in photoreceptors. Mutations in this gene have been associated with susceptibility to amyotrophic lateral sclerosis. [provided by RefSeq, Jul 2008],function:Class-III neuronal intermediate filament protein.,online information:Peripherin entry,similarity:Belongs to the intermediate filament family.,

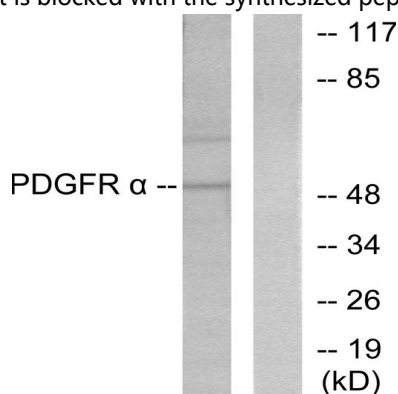
Research Area

Amyotrophic lateral sclerosis (ALS);

Image Data

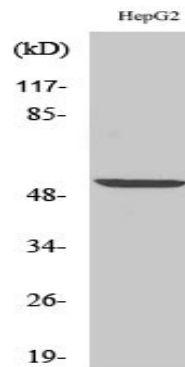


Immunohistochemistry analysis of paraffin-embedded human brain tissue, using Peripherin Antibody. The picture on the right is blocked with the synthesized peptide.

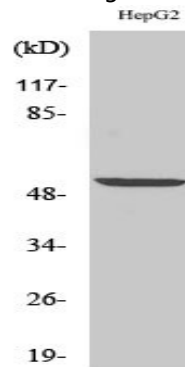


Western blot analysis of lysates from HepG2 cells, using Peripherin Antibody. The lane on the right is blocked with the synthesized peptide.

Product Name: PRPH Rabbit Polyclonal Antibody
Catalog #: APRab16553



Western Blot analysis of various cells using PRPH Polyclonal Antibody diluted at 1: 1000



Western Blot analysis of HepG2 cells using PRPH Polyclonal Antibody diluted at 1: 1000

Note

For research use only.