

Product Name: PRPF31 Rabbit Polyclonal Antibody
Catalog #: APRab16547



Summary

Production Name	PRPF31 Rabbit Polyclonal Antibody
Description	Rabbit Polyclonal Antibody
Host	Rabbit
Application	WB
Reactivity	Human,Mouse

Performance

Conjugation	Unconjugated
Modification	Unmodified
Isotype	IgG
Clonality	Polyclonal
Form	Liquid
Storage	Store at 4°C short term. Aliquot and store at -20°C long term. Avoid freeze/thaw cycles.
Buffer	Liquid in PBS containing 50% glycerol, 0.5% BSA and 0.02% New type preservative N.
Purification	Affinity purification

Immunogen

Gene Name	PRPF31
Alternative Names	PRPF31; PRP31; U4/U6 small nuclear ribonucleoprotein Prp31; Pre-mRNA-processing factor 31; Serologically defined breast cancer antigen NY-BR-99; U4/U6 snRNP 61 kDa protein; Protein 61K; hPrp31
Gene ID	26121.0
SwissProt ID	Q8WWY3.The antiserum was produced against synthesized peptide derived from human PRP31. AA range:331-380

Application

Dilution Ratio	WB 1:500-2000;ELISA 2000-20000
Molecular Weight	55kD

Product Name: PRPF31 Rabbit Polyclonal Antibody
Catalog #: APRab16547



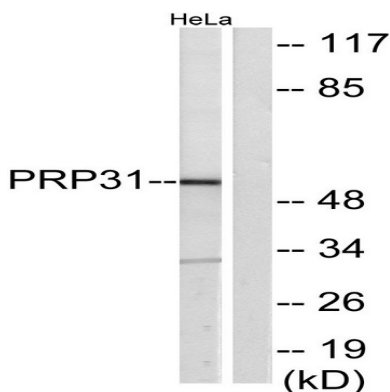
Background

This gene encodes a component of the spliceosome complex and is one of several retinitis pigmentosa-causing genes. When the gene product is added to the spliceosome complex, activation occurs.[provided by RefSeq, Jan 2009],disease:Defects in PRPF31 are the cause of retinitis pigmentosa type 11 (RP11) [MIM:600138]. RP leads to degeneration of retinal photoreceptor cells. Patients typically have night vision blindness and loss of midperipheral visual field. As their condition progresses, they lose their far peripheral visual field and eventually central vision as well. RP11 inheritance is autosomal dominant.,function:Involved in pre-mRNA splicing. Required for U4/U6.U5 tri-snRNP formation.,similarity:Contains 1 Nop domain.,subcellular location:Predominantly found in speckles and in Cajal bodies.,subunit:Part of a tri-snRNP complex. Interacts with C20orf14/U5 snRNP-associated 102 kDa protein.,tissue specificity:Ubiquitously expressed.,

Research Area

Spliceosome;

Image Data



Western blot analysis of lysates from HeLa cells, using PRPF31 Antibody. The lane on the right is blocked with the synthesized peptide.

Note

For research use only.