

Summary

Production Name	PROL4 Rabbit Polyclonal Antibody
Description	Rabbit Polyclonal Antibody
Host	Rabbit
Application	WB
Reactivity	Human,Rat,Mouse

Performance

Conjugation	Unconjugated
Modification	Unmodified
Isotype	IgG
Clonality	Polyclonal
Form	Liquid
Storage	Store at 4°C short term. Aliquot and store at -20°C long term. Avoid freeze/thaw cycles.
Buffer	Liquid in PBS containing 50% glycerol, and 0.02% New type preservative N.
Purification	Affinity purification

Immunogen

Gene Name	PRR4 LPRP PROL4
Alternative Names	
Gene ID	11272.0
SwissProt ID	Q16378.Synthesized peptide derived from part region of human protein

Application

Dilution Ratio	WB 1:500-2000 ELISA 1:5000-20000
Molecular Weight	14kD

Background

proline rich 4 (lacrimal)(PRR4) Homo sapiens This gene encodes a member of the proline-rich protein family that lacks a conserved repetitive domain. This protein may play a role in protective functions in the eye. Alternative splicing result in

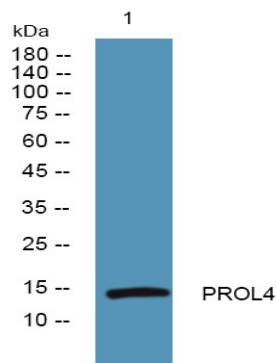
Product Name: PROL4 Rabbit Polyclonal Antibody
Catalog #: APRab16520



multiple transcript variants. Read-through transcription also exists between this gene and the upstream PRH1 (proline-rich protein HaellI subfamily 1) gene. [provided by RefSeq, Feb 2011],tissue specificity:Abundantly expressed in lacrimal gland where it is found in the acinar cells but not in the intralobular ducts. Also found in the submandibular gland, the parotid and sublingual glands,.

Research Area

Image Data



Western blot analysis of lysates from SW480 cells, primary antibody was diluted at 1:1000, 4°over night

Note

For research use only.