

Summary

Production Name	Prefoldin 1 Rabbit Polyclonal Antibody
Description	Rabbit Polyclonal Antibody
Host	Rabbit
Application	WB
Reactivity	Human,Mouse

Performance

Conjugation	Unconjugated
Modification	Unmodified
Isotype	IgG
Clonality	Polyclonal
Form	Liquid
Storage	Store at 4°C short term. Aliquot and store at -20°C long term. Avoid freeze/thaw cycles.
Buffer	Liquid in PBS containing 50% glycerol, 0.5% BSA and 0.02% New type preservative N.
Purification	Affinity purification

Immunogen

Gene Name	PFDN1
Alternative Names	PFDN1; PFD1; Prefoldin subunit 1
Gene ID	5201.0
SwissProt ID	O60925.The antiserum was produced against synthesized peptide derived from human PFDN1. AA range:1-50

Application

Dilution Ratio	WB 1:500-1:2000. ELISA: 1:20000.
Molecular Weight	14kD

Background

This gene encodes a member of the prefoldin beta subunit family. The encoded protein is one of six subunits of prefoldin, a

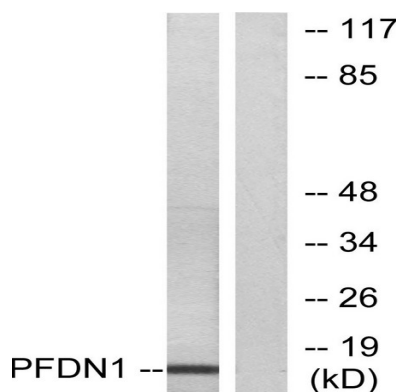
Product Name: Prefoldin 1 Rabbit Polyclonal Antibody
Catalog #: APRab16482



molecular chaperone complex that binds and stabilizes newly synthesized polypeptides, thereby allowing them to fold correctly. The complex, consisting of two alpha and four beta subunits, forms a double beta barrel assembly with six protruding coiled-coils. [provided by RefSeq, Jul 2008],function: Binds specifically to cytosolic chaperonin (c-CPN) and transfers target proteins to it. Binds to nascent polypeptide chain and promotes folding in an environment in which there are many competing pathways for nonnative proteins.,similarity: Belongs to the prefoldin subunit beta family.,subunit: Heterohexamer of two PFD-alpha type and four PFD-beta type subunits.,

Research Area

Image Data



Western blot analysis of lysates from RAW264.7 cells, using PFDN1 Antibody. The lane on the right is blocked with the synthesized peptide.

Note

For research use only.