
Summary

Production Name	PRAS40 Rabbit Polyclonal Antibody
Description	Rabbit Polyclonal Antibody
Host	Rabbit
Application	IHC, WB, ELISA
Reactivity	Human, Mouse, Rat

Performance

Conjugation	Unconjugated
Modification	Unmodified
Isotype	IgG
Clonality	Polyclonal
Form	Liquid
Storage	Store at 4°C short term. Aliquot and store at -20°C long term. Avoid freeze/thaw cycles.
Buffer	Liquid in PBS containing 50% glycerol, 0.5% BSA and 0.02% New type preservative N.
Purification	Affinity purification

Immunogen

Gene Name	AKT1S1
Alternative Names	AKT1S1; PRAS40; Proline-rich AKT1 substrate 1; 40 kDa proline-rich AKT substrate
Gene ID	84335.0
SwissProt ID	Q96B36. The antiserum was produced against synthesized peptide derived from human Akt1 S1. AA range: 207-256

Application

Dilution Ratio	WB 1:500 - 1:2000. IHC 1:100 - 1:300. ELISA: 1:5000..
Molecular Weight	40kD

Background

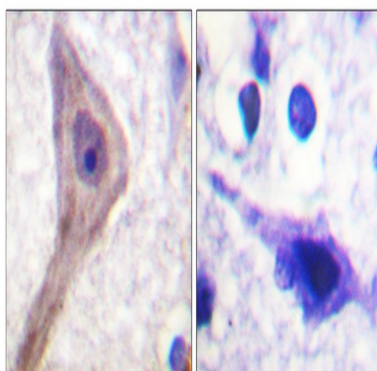
Product Name: PRAS40 Rabbit Polyclonal Antibody
Catalog #: APRab16459



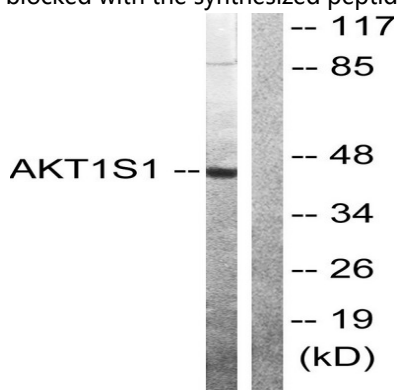
AKT1S1 is a proline-rich substrate of AKT (MIM 164730) that binds 14-3-3 protein (see YWHAH, MIM 113508) when phosphorylated (Kovacina et al., 2003 [PubMed 12524439]).[supplied by OMIM, Mar 2008],function:May play an important role in phosphatidylinositol 3-kinase (PI3K)-AKT1 survival signaling. Substrate for AKT1 phosphorylation, but can also be activated by AKT1-independent mechanisms. Its role in survival signaling pathways may be modulated by oxidative stress. May also play a role in nerve growth factor-mediated neuroprotection.,subcellular location:Found in the cytosolic fraction of the brain.,subunit:The phosphorylated form interacts with 14-3-3.,tissue specificity:Widely expressed with highest levels of expression in liver and heart. Expressed at higher levels in cancer cell lines (e.g. A549 and HeLa) than in normal cell lines (e.g. HEK293),.

Research Area

Image Data



Immunohistochemistry analysis of paraffin-embedded human brain tissue, using Akt1 S1 Antibody. The picture on the right is blocked with the synthesized peptide.



Western blot analysis of lysates from 293 cells, using Akt1 S1 Antibody. The lane on the right is blocked with the synthesized peptide.

Product Name: PRAS40 Rabbit Polyclonal Antibody
Catalog #: APRab16459



Western Blot analysis of various cells using PRAS40 Polyclonal Antibody

Note

For research use only.