

Product Name: PR48 Rabbit Polyclonal Antibody
Catalog #: APRab16449



Summary

Production Name	PR48 Rabbit Polyclonal Antibody
Description	Rabbit Polyclonal Antibody
Host	Rabbit
Application	WB
Reactivity	Human,Rat,Mouse

Performance

Conjugation	Unconjugated
Modification	Unmodified
Isotype	IgG
Clonality	Polyclonal
Form	Liquid
Storage	Store at 4°C short term. Aliquot and store at -20°C long term. Avoid freeze/thaw cycles.
Buffer	Liquid in PBS containing 50% glycerol, 0.5% BSA and 0.02% New type preservative N.
Purification	Affinity purification

Immunogen

Gene Name	PPP2R3B PPP2R3B; PPP2R3L; Serine/threonine-protein phosphatase 2A regulatory subunit B''
Alternative Names	subunit beta; PP2A subunit B isoform PR48; Protein phosphatase 2A 48 kDa regulatory subunit
Gene ID	28227.0
SwissProt ID	Q9Y5P8.The antiserum was produced against synthesized peptide derived from human PPP2R3B. AA range:364-413

Application

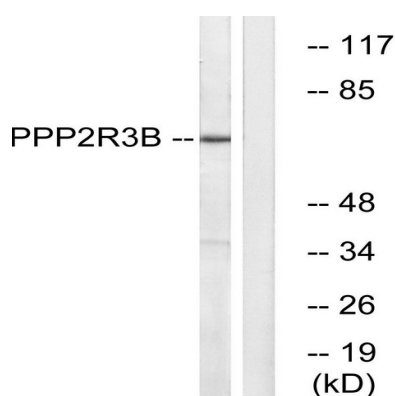
Dilution Ratio	WB 1:500-2000
Molecular Weight	70kD

Background

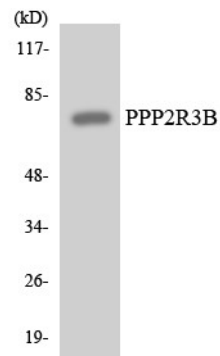
Protein phosphatase 2 (formerly named type 2A) is one of the four major Ser/Thr phosphatases and is implicated in the negative control of cell growth and division. Protein phosphatase 2 holoenzymes are heterotrimeric proteins composed of a structural subunit A, a catalytic subunit C, and a regulatory subunit B. The regulatory subunit is encoded by a diverse set of genes that have been grouped into the B/PR55, B'PR61, and B''PR72 families. These different regulatory subunits confer distinct enzymatic specificities and intracellular localizations to the holoenzyme. The product of this gene belongs to the B'' family. The B'' family has been further divided into subfamilies. The product of this gene belongs to the beta subfamily of regulatory subunit B''. [provided by RefSeq, Apr 2010],function:The B regulatory subunit might modulate substrate selectivity and catalytic activity, and also might direct the localization of the catalytic enzyme to a particular subcellular compartment.,miscellaneous:The gene encoding for this protein is located in the pseudoautosomal region 1 (PAR1) of X and Y chromosomes.,similarity:Contains 1 EF-hand domain.,subunit:PP2A consists of a common heterodimeric core enzyme, composed of a 36 kDa catalytic subunit (subunit C) and a 65 kDa constant regulatory subunit (PR65 or subunit A), that associates with a variety of regulatory subunits. Proteins that associate with the core dimer include three families of regulatory subunits B (the R2/B/PR55/B55, R3/B''/PR72/PR130/PR59 and R5/B'/B56 families), the 48 kDa variable regulatory subunit, viral proteins, and cell signaling molecules. Interacts with N-terminal region of CDC6,

Research Area

Image Data



Product Name: PR48 Rabbit Polyclonal Antibody
Catalog #: APRab16449



Western blot analysis of the lysates from HT-29 cells using PPP2R3B antibody.

Note

For research use only.