

Summary

Production Name	PPP4R1L Rabbit Polyclonal Antibody
Description	Rabbit Polyclonal Antibody
Host	Rabbit
Application	WB,ELISA
Reactivity	Human,Monkey

Performance

Conjugation	Unconjugated
Modification	Unmodified
Isotype	IgG
Clonality	Polyclonal
Form	Liquid
Storage	Store at 4°C short term. Aliquot and store at -20°C long term. Avoid freeze/thaw cycles.
Buffer	Liquid in PBS containing 50% glycerol, 0.5% BSA and 0.02% New type preservative N.
Purification	Affinity purification

Immunogen

Gene Name	PPP4R1L
Alternative Names	PPP4R1L; C20orf192; Putative serine/threonine-protein phosphatase 4 regulatory subunit 1-like
Gene ID	55370.0
SwissProt ID	Q9P1A2.The antiserum was produced against synthesized peptide derived from human PPP4R1L. AA range:191-240

Application

Dilution Ratio	WB 1:500 - 1:2000. ELISA: 1:10000. Not yet tested in other applications.
Molecular Weight	50kD

Product Name: PPP4R1L Rabbit Polyclonal Antibody
Catalog #: APRab16434

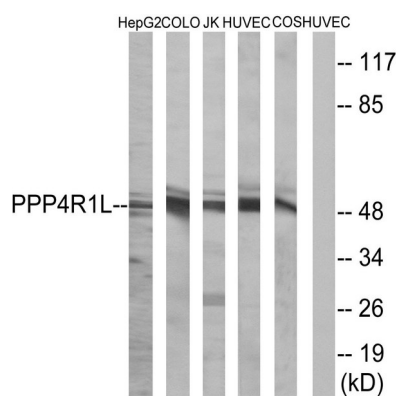


Background

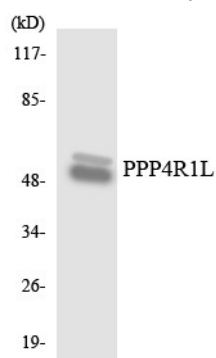
function: May be a regulatory subunit of serine/threonine-protein phosphatase 4., similarity: Contains 4 HEAT repeats., function: May be a regulatory subunit of serine/threonine-protein phosphatase 4., similarity: Contains 4 HEAT repeats.,

Research Area

Image Data

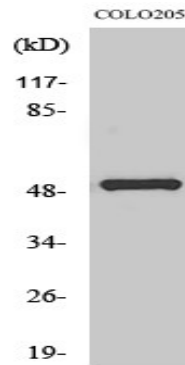


Western blot analysis of lysates from COLO, HUVEC, HepG2, Jurkat, and COS cells, using PPP4R1L Antibody. The lane on the right is blocked with the synthesized peptide.



Western blot analysis of the lysates from HepG2 cells using PPP4R1L antibody.

Product Name: PPP4R1L Rabbit Polyclonal Antibody
Catalog #: APRab16434



Western Blot analysis of various cells using PPP4R1L Polyclonal Antibody

Note

For research use only.