

Product Name: PPP1R2P3 Rabbit Polyclonal Antibody
Catalog #: APRab16427



Summary

Production Name	PPP1R2P3 Rabbit Polyclonal Antibody
Description	Rabbit Polyclonal Antibody
Host	Rabbit
Application	IHC,ELISA
Reactivity	Human,Rat,Mouse

Performance

Conjugation	Unconjugated
Modification	Unmodified
Isotype	IgG
Clonality	Polyclonal
Form	Liquid
Storage	Store at 4°C short term. Aliquot and store at -20°C long term. Avoid freeze/thaw cycles.
Buffer	Liquid in PBS containing 50% glycerol, 0.5% BSA and 0.02% New type preservative N.
Purification	Affinity purification

Immunogen

Gene Name	PPP1R2P3
Alternative Names	PPP1R2P3; Putative protein phosphatase inhibitor 2-like protein 3; Protein phosphatase 1; regulatory subunit 2 pseudogene 3
Gene ID	153743.0
SwissProt ID	Q6NXS1.Synthesized peptide derived from PPP1R2P3 . at AA range: 40-120

Application

Dilution Ratio	IHC 1:100-1:300 ELISA: 1:40000
Molecular Weight	

Background

caution:Could be the product of a pseudogene.,function:Inhibitor of protein-phosphatase 1.,similarity:Belongs to the

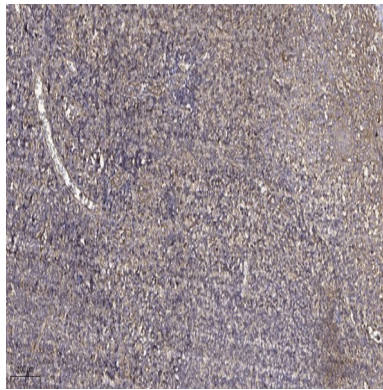
Product Name: PPP1R2P3 Rabbit Polyclonal Antibody
Catalog #: APRab16427



protein phosphatase inhibitor 2 family.,caution:Could be the product of a pseudogene.,function:Inhibitor of protein-phosphatase 1.,similarity:Belongs to the protein phosphatase inhibitor 2 family.,

Research Area

Image Data



Immunohistochemical analysis of paraffin-embedded human tonsil. 1, Antibody was diluted at 1:200 (4° overnight) . 2, Tris-EDTA,pH9.0 was used for antigen retrieval. 3,Secondary antibody was diluted at 1:200 (room temperature, 30min) .

Note

For research use only.