

## Summary

<b>Production Name</b>	PPP1R1C Rabbit Polyclonal Antibody
<b>Description</b>	Rabbit Polyclonal Antibody
<b>Host</b>	Rabbit
<b>Application</b>	IHC,ELISA
<b>Reactivity</b>	Human,Mouse

## Performance

<b>Conjugation</b>	Unconjugated
<b>Modification</b>	Unmodified
<b>Isotype</b>	IgG
<b>Clonality</b>	Polyclonal
<b>Form</b>	Liquid
<b>Storage</b>	Store at 4°C short term. Aliquot and store at -20°C long term. Avoid freeze/thaw cycles.
<b>Buffer</b>	Liquid in PBS containing 50% glycerol, 0.5% BSA and 0.02% New type preservative N.
<b>Purification</b>	Affinity purification

## Immunogen

<b>Gene Name</b>	PPP1R1C
<b>Alternative Names</b>	PPP1R1C; Protein phosphatase 1 regulatory subunit 1C; Inhibitor-5 of protein phosphatase 1; IPP5
<b>Gene ID</b>	151242.0
<b>SwissProt ID</b>	Q8WVI7.The antiserum was produced against synthesized peptide derived from human PPP1R1C. AA range:5-54

## Application

<b>Dilution Ratio</b>	IHC 1:100-1:300 ELISA: 1:10000
<b>Molecular Weight</b>	

## Background

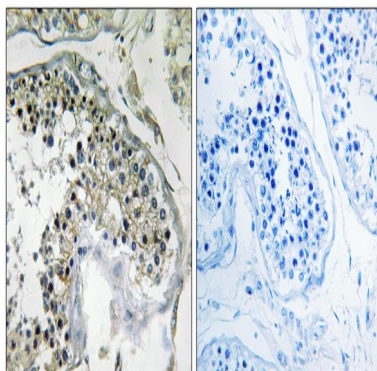
**Product Name: PPP1R1C Rabbit Polyclonal Antibody**  
**Catalog #: APRab16426**



Protein phosphatase-1 (PP1) is a major serine/threonine phosphatase that regulates a variety of cellular functions. PP1 consists of a catalytic subunit (see PPP1CA; MIM 176875) and regulatory subunits that determine the subcellular localization of PP1 or regulate its function. PPP1R1C belongs to a group of PP1 inhibitory subunits that are themselves regulated by phosphorylation (Wang et al., 2008 [PubMed 18310074]).[supplied by OMIM, Feb 2010],function:Inhibitor of protein-phosphatase 1.,similarity:Belongs to the protein phosphatase inhibitor 1 family.,

## Research Area

## Image Data



Immunohistochemistry analysis of paraffin-embedded human testis tissue, using PPP1R1C Antibody. The picture on the right is blocked with the synthesized peptide.

## Note

For research use only.